



# RELEASE GUIDE

GeoMedia Smart Client 2018 Update 3

October 22, 2018



---

## Contents

<b>About This Release</b> .....	<b>4</b>
<b>New Platforms</b> .....	<b>4</b>
Licensing.....	4
<b>GeoMedia Smart Client Product Tiers</b> .....	<b>4</b>
GeoMedia Smart Client Essentials.....	4
GeoMedia Smart Client Advantage .....	5
GeoMedia Smart Client Professional .....	5
<b>New in 2018</b> .....	<b>5</b>
OpenStreetMap integration .....	5
Windows 10 Location API .....	7
4K Display Support .....	8
Extended OGC Service support .....	9
Hexagon App Launcher .....	10
Additional Changes .....	10
Active Directory .....	10
Assembly Cache.....	10
Decimal representation of geographic coordinate reference system .....	10
Linux & Mac OS X support .....	10
Workflow - resolve dependencies .....	10
Workflow - Extended length of form field names.....	10
PostgreSQL Migration Steps from 2016 to 2018 .....	10
For Java Developers Only.....	11
Migration Steps for GMSC 2018 Update 3 .....	11
GMSC Update 3 SDK.....	11
<b>System Requirements</b> .....	<b>12</b>
GeoMedia Smart Client.....	12



---

**Issues Resolved**..... 14  
**About Us**..... 18  
**Copyright**..... 18



## ABOUT THIS RELEASE

This document describes the enhancements for GeoMedia® Smart Client. Although the information in this document is current as of the product release, see the Hexagon Geospatial Support website for the most current version.

This release includes both enhancements and fixes. For information on fixes that were made to GeoMedia Smart Client for this release, see the Issues Resolved section. For information on enhancements, see the New Technology section.

This document is only an overview and does not provide all the details about the product's capabilities. See the online help and other documents provided with GeoMedia Smart Client for more information.

## NEW PLATFORMS

### LICENSING

Starting with the Power Portfolio 2018 release, licenses are no longer based on Certificate-file based technology. Instead, licenses are based on Activation IDs, allowing you to activate products without providing Host IDs or other hardware-related parameters. You can also re-host without emailing the licensing team for assistance. The Power Portfolio 2018 release also includes improved tools that make it easier to install licenses, set up license servers, and provide more professional error handling. Finally, the Power Portfolio 2018 release includes improved customer notification in the products, such as an “end of subscription” message in the Start-up screen. These more secure and automated processes, along with a new licensing portal, provide you with a better overall user experience.

## GEOMEDIA SMART CLIENT PRODUCT TIERS

GeoMedia® Smart Client is a GIS workflow management system that connects tasks and dependencies across different roles in a process and dynamically configures to reflect a user's role and specific workflow steps. End users can use advanced geospatial functionality via simple-to-use, map-based tools, disentangling them from non-essential tasks and focusing their time on their area of expertise.

Workflow Manager is a standalone product and a rich toolset that lets you construct highly-focused business workflows that primarily support attributive data, but also may contain a spatial component. It provides the means for third parties, contractors, and even the public to make use of task-specific, highly-specialized processes that tie back to your enterprise operations. No programming skills are required to build optimized form-based workflows that can be made available in the browser and through Geospatial Portal.

GeoMedia Smart Client is available in three product tiers (Essentials, Advantage, Professional) to complement a broad range of customers – from a small business with few users doing simple vector editing, to large, multi-disciplinary environments supporting multiple business workflows across various departments.

### GEOMEDIA SMART CLIENT ESSENTIALS

Organizations can provide high-end vector redlining functionality and the ability for an unlimited number of users to display raster and vector maps, analyze and query data, print, measure, and use dimensioning functions.

## GEOMEDIA SMART CLIENT ADVANTAGE

The Advantage level tier of GeoMedia Smart Client contains all the features and functionality of the Essentials product, plus the ability for an organization to use predefined business process workflows and edit data. The additional Workflow Manager – Runtime module enables customers to run pre-built workflows, edit attributes, or capture and change spatial data on the web client and push the changes back to the server database.

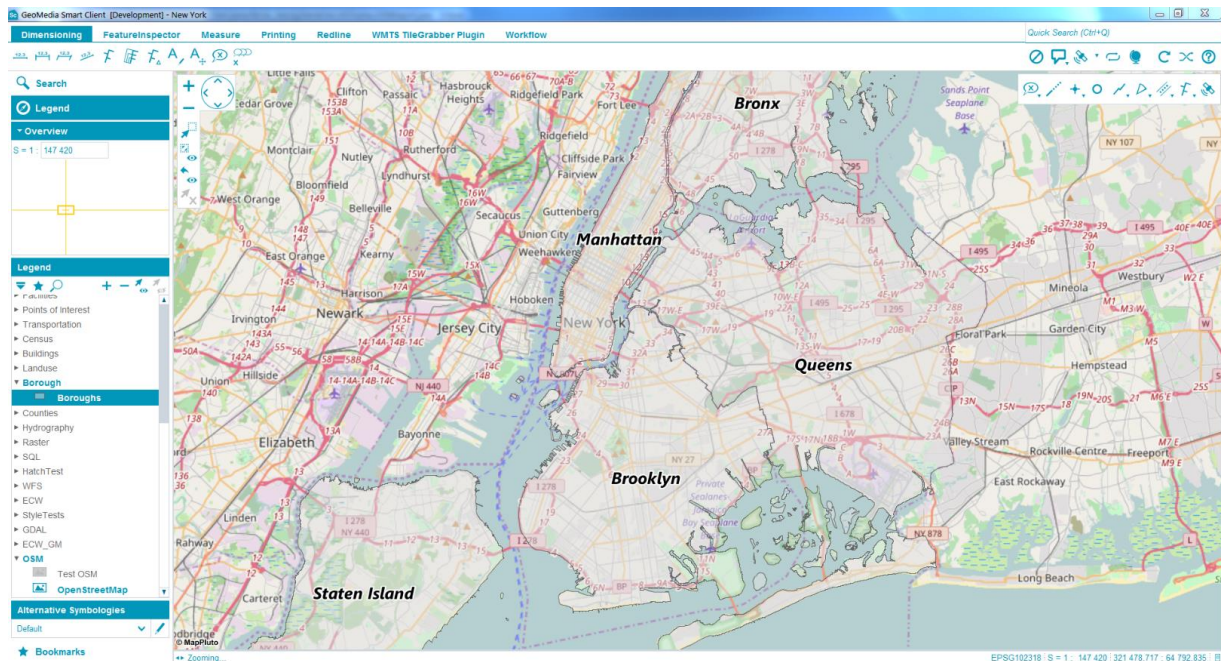
## GEOMEDIA SMART CLIENT PROFESSIONAL

The Professional level tier of GeoMedia Smart Client contains all the features and functionality of the Advantage product, plus it includes Workflow Manager – Editor, enabling an organization to develop workflows or revise the structure, process, and forms of current ones.

## NEW IN 2018

## OPENSTREETMAP INTEGRATION

OpenStreetMap© (OSM) integration provides an easy way to setup a new project without any background data. OSM in GMSC 2018 is available for the Java client as well as for Public Maps.





The background map content is based on information provided from OSM contributors.

<b>Feature</b> ^	WMS
Features	WFS
<b>New Feature</b>	WMTS
Current:	IWS
WMTS	Bing Maps
New WMTS	<b>OSM</b>

#### Configuration

Template: **OpenStreetMap**

Uri: \*   
Thunderforest - OpenCycleMap  
**Thunderforest - Transport**  
Custom

Copyright:  

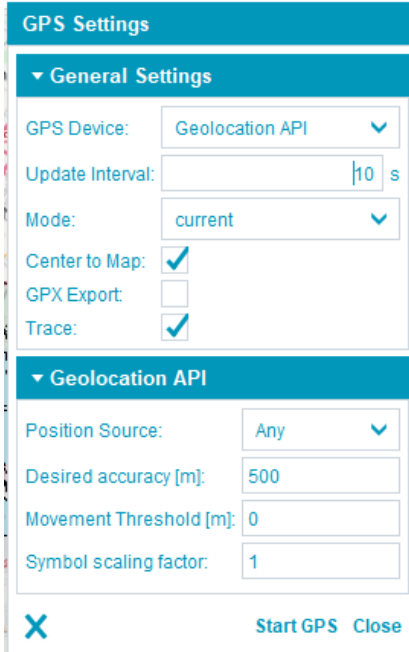
OpenStreetMap® is open data, licensed under the Open Data Commons Open Database License (ODbL) by the OpenStreetMap Foundation (OSMF). Please consider the copyright and license information at <https://www.openstreetmap.org/copyright/en> before adding this layer to your project. Please read also the [Tile Usage Policy](#).

Templates simplify the OSM configuration in Smart Client Administrator and Public Maps Administrator.



## WINDOWS 10 LOCATION API

Use GPS positions via the standard Windows 10 API with no additional drivers or protocols.



The screenshot shows the 'GPS Settings' dialog box. It is divided into two sections: 'General Settings' and 'Geolocation API'. In the 'General Settings' section, 'GPS Device' is set to 'Geolocation API', 'Update Interval' is 10 seconds, 'Mode' is 'current', 'Center to Map' is checked, 'GPX Export' is unchecked, and 'Trace' is checked. In the 'Geolocation API' section, 'Position Source' is 'Any', 'Desired accuracy [m]' is 500, 'Movement Threshold [m]' is 0, and 'Symbol scaling factor' is 1. At the bottom, there is a close button (X), a 'Start GPS' button, and a 'Close' button.

Desired accuracy must be a meaningful value. To help determine desired accuracy values, Microsoft offers a valid range for each position source. For more information, visit: <https://docs.microsoft.com/en-us/uwp/api/windows.devices.geolocation>

Accuracy with different settings:

**GPS:** within approximately 10 meters

**Wi-Fi:** between approximately 30 meters and 500 meters

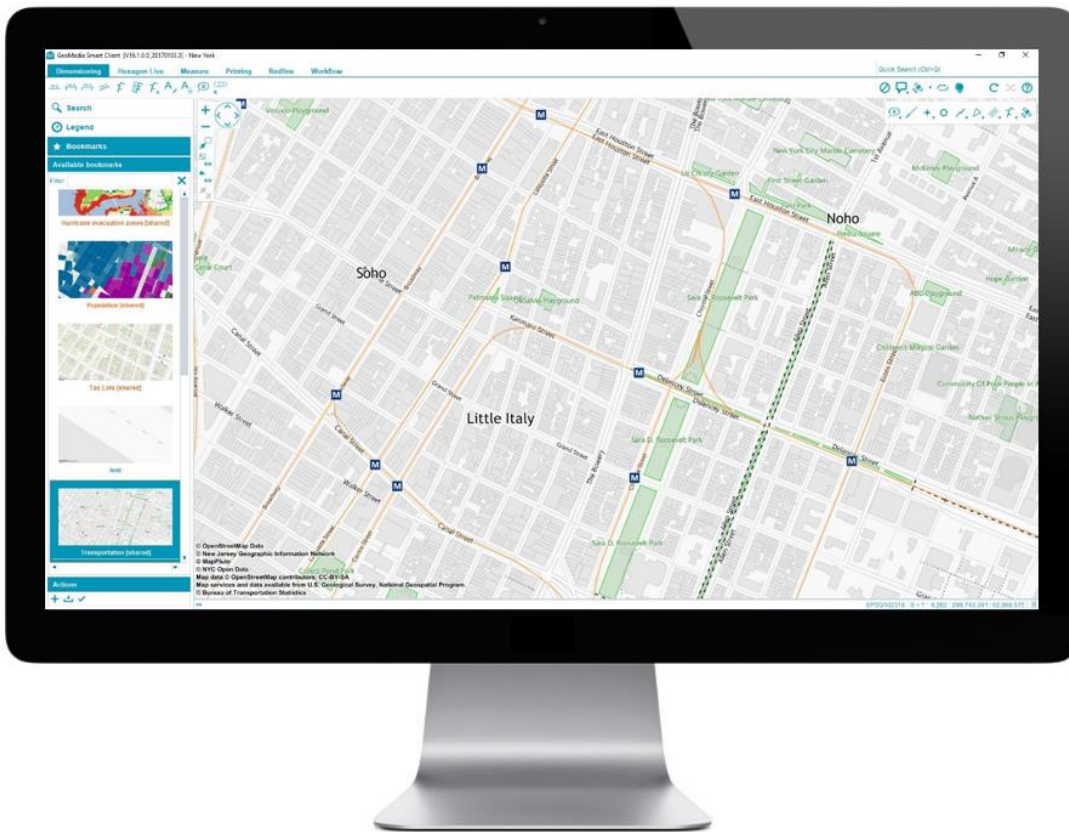
**Cell towers:** between approximately 300 meters and 3,000 meters

**IP address:** between approximately 1,000 meters and 5,000 meters



## 4K DISPLAY SUPPORT

With GeoMedia Smart Client 2018, you get full 4K support in the Java client, Workflows, and Public Maps.



### Limitation:

GeoMedia Smart Client 2018 doesn't support the generation of HiDPI raster map tiles.







## HEXAGON APP LAUNCHER

With the release of GeoMedia Smart Client 2018 Update 3, the technology stack will change for the Java platform.

- OpenJDK will now be used as standard virtual machine
- Java Web Start is replaced by a component called “Hexagon App Launcher”
- OpenJFX replaces JavaFX

Starting with the 2018.3 release, GMSC is no longer dependent on a specific Java runtime version which must be pre-installed on the machine.

For more information visit:

<https://community.hexagongeospatial.com/t5/GMSC-Tutorials/GMSC-2018-3-Hexagon-App-Launcher/ta-p/27340>

## ADDITIONAL CHANGES

### ACTIVE DIRECTORY

In GeoMedia Smart Client 2018, multilevel hierarchy on Active Directory is supported, giving you access to nested groups.

### ASSEMBLY CACHE

In GeoMedia Smart Client 2018 the Assembly cache moved from

**WINDOWS\Microsoft.NET\assembly\GAC\_MSIL** to the corresponding folders directly in the installation folder.

All \*.dll's are now found in the different folders of **\GeoMedia Smart Client\Program\**.

### DECIMAL REPRESENTATION OF GEOGRAPHIC COORDINATE REFERENCE SYSTEM

Every geographic coordinate reference system will also be shown in a decimal representation in the status bar.

### LINUX & MAC OS X SUPPORT

Due the [removal of Java Web Start from JDK 11](#), we regret to announce that the support of Linux and Mac will be discontinued.

### WORKFLOW - RESOLVE DEPENDENCIES

A ComboBox field receives a new value by dependency-resolving only if the value is in its list of values. Otherwise, its value is set to null. All children of a ComboBox field were resolved with the valid value or null, not last persisted value anymore.

### WORKFLOW - EXTENDED LENGTH OF FORM FIELD NAMES

Names of form fields can now be longer than 30 characters. Therefore, more complex database schemas can be managed.

## POSTGRESQL MIGRATION STEPS FROM 2016 TO 2018

**Note: Only needed for queries, if the column type in the database is TEXT based and the input could be a number.**

You must change the queries and cast the input to match the database column type: **SELECT .... FROM TABLE WHERE ATTRIBUTE=CAST({ENTITY.ATTRIBUTE} AS text)**



## FOR JAVA DEVELOPERS ONLY

### MIGRATION STEPS FOR GMSC 2018 UPDATE 3

With the newest GMSC version you have to migrate your custom plugins to the newest JAVA version.

Language Packs and Custom CRS must be downloaded once again.

For more information have a look at this article:

<https://community.hexagongeospatial.com/t5/Developers-Knowledge-Base/Migration-Steps-for-GMSC-2018-Update-3/ta-p/27285/>

### GMSC UPDATE 3 SDK

The newest GMSC version now got updated Git branches and is now working with Gradle.

For more information have a look at this article:

<https://community.hexagongeospatial.com/t5/SDK-API/Starting-with-2018-Update-3/ta-p/27282>



## SYSTEM REQUIREMENTS

### GEOMEDIA SMART CLIENT

Computer/ Processor	Server side: requires 1.4 GHz minimum (64-bit) Client side: 1 GHz minimum (64-bit)
Memory (RAM)	Server side: 8 GB minimum Client side: 2 GB minimum
Disk Space	Server side: 512 MB for application Additional disk space requirements vary depending on the amount of geodata
Operating Systems	<p>Server side:</p> <ul style="list-style-type: none"> <li>● Windows® Server 2012 (64-bit)</li> <li>● Windows® Server 2012 R2 (64-bit)</li> <li>● Windows® Server 2016</li> </ul> <p>Windows® Server will be supported until the end of Microsoft's Mainstream support of the product.  <a href="https://support.microsoft.com/en-us/lifecycle">https://support.microsoft.com/en-us/lifecycle</a></p> <p>Client side:</p> <ul style="list-style-type: none"> <li>● Any Microsoft operating system which is certified for Java Runtime Environment (JRE) version 10 (18.3)</li> </ul> <p>For example:</p> <ul style="list-style-type: none"> <li>● Windows® 7 SP1 (64-bit)</li> <li>● Windows® 8.1 (64-bit)</li> <li>● Windows® 10 (64-bit)</li> </ul> <p>Windows® OS will be supported until the end of Microsoft's Mainstream support of the product.  <a href="https://support.microsoft.com/en-us/lifecycle">https://support.microsoft.com/en-us/lifecycle</a></p>



Database Server Engines	<p>Database Servers (Read / Write)</p> <ul style="list-style-type: none"> <li>● Oracle® Server 12c or higher (32-bit and 64-bit)</li> <li>● SQL Server® 2014 SP2 or higher (32-bit and 64-bit)</li> <li>● Postgres SQL 9.3 or higher (32-bit and 64-bit)</li> </ul>
Additional Software	<p>Server Side:</p> <ul style="list-style-type: none"> <li>● .NET Framework 4.5.2</li> <li>● Windows Installer 3.1 or higher</li> <li>● MDAC 2.7 or WDAC 9.0.1</li> <li>● IIS 8 or higher</li> <li>● Oracle 12c ODAC or higher (64-bit)</li> </ul> <p>Optional:</p> <ul style="list-style-type: none"> <li>● Access Database Engine (64-bit) - part of the GMSC installation media</li> </ul> <p>Client side:</p> <ul style="list-style-type: none"> <li>● Java Runtime Environment (JRE) Release 9 or 10 (18.3)</li> </ul>
Browser	<ul style="list-style-type: none"> <li>● IE 11 and Microsoft Edge</li> <li>● Chrome 63</li> <li>● Firefox 57</li> </ul>
Graphics Displays	Recommended screen resolution of 1280 x 1024 or better with 24-bit color
Peripherals	<p>Server side: Access to DVD drive</p> <p>Client side: Mouse or pen for geodata input</p>
Input device for tablets	Client side: Digitizer is recommended



## ISSUES RESOLVED

Issue #	Summary	Description / How to Reproduce
SC-2223	Workflow hyperlink with blank space cannot be accessed via Java client	<p>If a hyperlink FormField contains a blank space in its URL, the link cannot be accessed from Java client, but it works fine if the Workflow is run in standalone mode.</p> <p>Sample definition:  <code>&lt;FormField name="FILE" label="File" maxlength="500" editable="true" persisted="false" type="hyperlink" datatype="string" defaultvalue="SQL[SELECT replace(PFAD,' ','%20') FROM A10_VSA_Datei WHERE GID = \{FORM.GID}\]" /&gt;</code></p> <p>Error message in Java log:        java.net.URISyntaxException: Illegal character in path at index XX:</p>
SC-2260	Server adds 3D Geometries to tables which contain only 2D spatial data	
SC-2278	Font Families missing in Symbol Editor	<p>Using "Arial Narrow"        "Arial Narrow" (ARIALNxxx.ttf) could be used in the past with GMSC 2015 while after updating to GMSC 2016 the font cannot be chosen from the "Font Family" pulldown list in the web based GMSC Administrator / Symbol editor any more.</p> <p>Support has confirmed that for any Font Family present in Windows/Fonts the Symbol Editor is only list the Family name font as being available and ignoring the Font Family Members.        ie. Arial will be available but Arial Narrow is not as an option for Font Family in Style Editor</p>
SC-2279	GMSC losing Publish Job settings after Publishing, error when 'Publish Again'	Publish job settings while shown correctly after Job definition are lost when showing job details after publish order execution. If 'Publish Again' is attempted there is 'Unexpected error'.
SC-2289	Changing an edited style editor rule	<p>In GMSC Admin: An edited style editor rule can only be changed using a 'workaround':</p> <ul style="list-style-type: none"> <li>- User wants to change an edited rule:            Click on the rule &gt; apply changes &gt; click 'show maximized preview' &gt; Save.</li> <li>- User wants to revert the edited rule back to the default rule:            Click on the rule &gt; click on the small trash can icon &gt; click 'show maximized preview' &gt; Save.</li> <li>- User wants to delete a symbolizer containing an edited rule:            Click on the rule &gt; click on the small trash can icon &gt; click 'show maximized preview' &gt; Save &gt; click on the library again &gt; delete the symbolizer</li> </ul> <p>It seems that GMSC 'remembers' the rule edit somehow until 'show maximized preview' is activated...</p>



SC-2290	Missing feature when import from PostGIS database (tables with name starting with letter 'e' to 'z' are all missing from the list)	Missing features when import from PostGIS database (tables with name starting with letter 'e' to 'z' are all missing from the list)
SC-2292	Queries input strings that 'could' be a date are automatically handled as date by GMSC	What appears to be happening here is that if the input string to a feature Queries 'could' be interpreted as a date it is automatically (and incorrectly) handled as a date. GMSC modifies the input string before passing it to the database. This results in incorrect results for customers using user input search. This should not happen and customer confirms this was not happening in GMSC 2015 (support has not confirmed this) and the same SQL query with hard code value in place of use input does not behave in this way when done direct to database in SSMS
SC-2293	Rasterdata shows white lines when the data is cached	When rasterdata-layer is created in GMSC and uses caching for this layer, the layer shows a white line in specific places and specific scales (mostly under 1:1500). This doesn't happen when live instead of caching is used.
SC-2300	Workflow - Runtime Workflow not listed at Administrators WorkflowConnection	Compiled workflows will not be listed at Administrator>New Workflow Connection.
SC-2301	Automatic layout of distance dimension doesn't work correctly for rotated texts	the arrows may clash
SC-2302	browseInNativeBrowser adds redundant URL location when running workflow from SC	<p>The browseInNativeBrowser function used for:</p> <ol style="list-style-type: none"> <li>1) FormField type="hyperlink"</li> <li>2) FormAction with script SCRIPT[IG.browseInNativeBrowser(\{FORM.URL})]</li> </ol> <p>Adds redundant server name before the actual URL (see screenshot).</p> <p>Sample workflow definition:</p> <pre>&lt;Form name="StatesForm" idfield="ID" table="STATES"&gt; &lt;FormTab name="STATES_Tab"&gt; &lt;FormGroup name="STATES_Group"&gt; &lt;FormField name="ID" label="ID:" visible="hidden" datatype="number" required="false" maxlength="22" type="textfield" /&gt; &lt;FormField name="STATE_NAME" label="NAME:" visible="form" datatype="string" required="false" maxlength="50" type="textfield" /&gt; &lt;FormField name="URL" label="Link:" visible="form" datatype="string" required="false" maxlength="50" type="hyperlink" /&gt; &lt;/FormGroup&gt; &lt;/FormTab&gt; &lt;FormAction name="BrowseURL" label="Open Url" visible="form" action="SCRIPT[IG.browseInNativeBrowser(\{FORM.URL})]" /&gt; &lt;/Form&gt;</pre>
SC-2303	Cannot display raster (ecw) image from a PostGIS connection	When inserting a raster image feature from a PostGIS connection and clicking "Test settings" button, it ends up with "Unexpected error" message. The log reads "Intergraph.Emea.Maps.MapSourceQueryException: Cannot perform query on Map Source." (The whole relevant part of the log is attached).



SC-2306	Add Symbol in locked active Rule - both Symbols are marked as active.	<p>* Open a new Style.          * Add a new Symbolizer -&gt; "Polygon"          * Click on a locked Rule (for example "Highlighted") to set it as active Rule.          * Add a new Symbolizer -&gt; "Line" with the locked Rule as active Rule.</p> <p>When you click on the "Default" Rule you now see the two Symbolizers and both marked as active.</p> <p>Only one should be marked as active.</p> <p>Its only visual because the last Symbolizer is the active one and is shown in the edit window on the right side.</p>
SC-2311	White stripes in low scale levels of generated WMTS	This is in relation to previous report (SC-2171) which doesn't reproduce on newer versions. But, we found that the WMTS shows white stripes between tiles below the display scale 1:100
SC-2314	Use the X-Forwarded-Proto header to get the protocol for all URL's	Use X-Forwarded-Proto header for the generation of all URL's. At the moment the following links uses always http:  - Live Layer's at Public Maps (POI's, Features) - Codebase at the JNLP - etc...
SC-2321	Delete Tactical symbols not working in map in SP4	Attempt to delete a Tactical Symbol using GMSC SP4 does not work; Select the "Remove Tactical Symbol" then double clicking on a Tactical Symbol to remove does the tactical symbol.
SC-2329	Workflow cannot be launched after redline is activated and selected	<ul style="list-style-type: none"> <li>• Have a GMSC project with Redline claim and any workflow assigned</li> <li>• Workflow in test was defined in an Action tab</li> <li>• Draw a Redline object in a running GMSC project</li> <li>• Set Redline layer active and select the redlined object</li> <li>• Try to launch a workflow</li> </ul>
SC-2330	'Illegal color string T' exceptions when using Redlining	When using Redline commands to draw a redline geometry, following exceptions fill the log file (and Java console as well).
SC-2333	FormField Copyright for Mapview is defined with only 128 characters in the GMSC admin	The column in the database for the copyright in the table RPI_MAPVIEW is 1024 characters long, but in the admin there is a maxlength="128" on this field.
SC-2345	GPSPlugin doesn't detect a GPS device	LocationAPI  GeoLocation  Serial
SC-2347	App Launcher - Certificates could not be verified which use Root Certificates unknown to the JDK	
SC-2348	ECWP tiles will be reloaded if a user forces a reload of another layer	If a use reloads a layer manually and a ECWP layer is visible, then GMSC also reloads the progressive content.
SC-2350	Printing - Legend incomplete, it shows only one icon	



SC-2371	Map select not working	When clicking elements in the map on the active layer, it does not select or deselect them. It simply does nothing.  The selection works only when using the point fence tool.
---------	------------------------	--



## ABOUT US

Hexagon Geospatial helps you make sense of the dynamically changing world. We enable you to envision, experience and communicate geographic information. Our technology provides you the form to design, develop and deliver solutions that solve complex, real-world challenges. Ultimately, this is realized through our creative software products and platforms.

**CUSTOMERS.** Globally, a wide variety of organizations rely on our products daily including local, state and national mapping agencies, transportation departments, defense organizations, engineering and utility companies, and businesses serving agriculture and natural resource needs. Our portfolio enables these organizations to holistically understand change and make clear, reliable decisions.

**TECHNOLOGY.** Our priority is to deliver products, platforms and solutions that make our customers successful. Hexagon Geospatial is focused on developing technology that displays and interprets information in a personalized, meaningful way. We enable you to transform location-based content into dynamic and useable business information that creatively conveys the answers you need.

**PARTNERS.** As an organization, we are partner-focused, working alongside our channel to ensure we succeed together. We provide the right platforms, products, and support to our business partners so that they may successfully deliver sophisticated solutions for their customers. We recognize that we greatly extend our reach and influence by cultivating channel partner relationships both inside and outside of Hexagon.

**TEAM.** As an employer, we recognize that the success of our business is the result of our highly motivated and collaborative staff. At Hexagon Geospatial, we celebrate a diverse set of people and talents, and we respect people for who they are and the wealth of knowledge they bring to the table. We retain talent by fostering individual development and ensuring frequent opportunities to learn and grow.

**HEXAGON.** Hexagon's solutions integrate sensors, software, domain knowledge and customer workflows into intelligent information ecosystems that deliver actionable information. They are used in a broad range of vital industries.

Hexagon (Nasdaq Stockholm: HEXA B) has more than 18,000 employees in 50 countries and net sales of approximately 3.3bn USD. Learn more at [hexagon.com](http://hexagon.com) and follow us @HexagonAB.

## COPYRIGHT

© 2018 Hexagon AB and/or its subsidiaries and affiliates. All Rights Reserved. Hexagon has registered trademarks in many countries throughout the world. Visit the [Trademarks Page](#) for information about the countries in which the trademarks are registered. See Product Page and Acknowledgements for more information.

### Product Documentation Terms of Use

PLEASE READ THESE TERMS CAREFULLY BEFORE USING HEXAGON GEOSPATIAL'S DOCUMENTATION ("DOCUMENT"). USE OF THIS DOCUMENT INDICATES ACCEPTANCE OF THIS AGREEMENT WITHOUT MODIFICATION. IF YOU DO NOT AGREE TO THE TERMS HEREOF ("TERMS"), DO NOT USE THIS DOCUMENT.

### Use Of This Document

All materials in this Document are copyrighted and any unauthorized use may violate worldwide copyright, trademark, and other laws. Subject to the terms of this Agreement, Hexagon Geospatial (a Division of Intergraph Corporation) and Intergraph's subsidiaries ("Intergraph") hereby authorize you to reproduce this Document solely for your personal, non-commercial use. In consideration of this authorization, you agree to

retain all copyright and other proprietary notices contained therein. You may not modify the Materials in any way or reproduce or publicly display, perform, or distribute or otherwise use them for any public or commercial purpose, except as specifically authorized in a separate agreement with Hexagon Geospatial.

The foregoing authorization specifically excludes content or material bearing a copyright notice or attribution of rights of a third party. Except as expressly provided above, nothing contained herein shall be construed as conferring by implication, estoppel or otherwise any license or right under any copyright, patent or trademark of Hexagon Geospatial or Intergraph or any third party.

If you breach any of these Terms, your authorization to use this Document automatically terminates. Upon termination, you will immediately destroy any downloaded or printed Materials in your possession or control.

#### Disclaimers

ALL MATERIALS SUPPLIED HEREUNDER ARE PROVIDED "AS IS", WITHOUT WARRANTY OF ANY KIND, EITHER EXPRESSED OR IMPLIED, INCLUDING, BUT NOT LIMITED TO, ANY IMPLIED WARRANTIES OF MERCHANTABILITY, FITNESS FOR A PARTICULAR PURPOSE, OR NON-INFRINGEMENT. Hexagon Geospatial does not warrant that the content of this Document will be error-free, that defects will be corrected, or that any Hexagon Geospatial Website or the services that make Materials available are free of viruses or other harmful components.

Hexagon Geospatial does not warrant the accuracy and completeness of this Document. Hexagon Geospatial may make changes to this Document at any time without notice.

#### Limitation Of Liability

IN NO EVENT SHALL HEXAGON GEOSPATIAL BE LIABLE FOR ANY DIRECT, INDIRECT, INCIDENTAL, SPECIAL OR CONSEQUENTIAL DAMAGES, OR DAMAGES FOR LOSS OF PROFITS, REVENUE, DATA OR USE, INCURRED BY YOU OR ANY THIRD PARTY, WHETHER IN AN ACTION IN CONTRACT OR TORT, ARISING FROM YOUR ACCESS TO, OR USE OF, THIS DOCUMENT.

#### Indemnification

You agree to defend, indemnify, and hold harmless Hexagon Geospatial, its officers, directors, employees, and agents from and against any and all claims, liabilities, damages, losses or expense, including reasonable attorneys' fees and costs, arising out of or in any way connected with your access to or use of this Document.

#### Use Of Software

Use of software described in this Document is subject to the terms of the end user license agreement that accompanies the software, if any. You may not download or install any software that is accompanied by or includes an end user license agreement unless you have read and accepted the terms of such license agreement. Any such software is the copyrighted work of Hexagon Geospatial, Intergraph or its licensors. Portions of the user interface copyright 2012-2018 Telerik AD.

#### Links To Third Party Websites

This Document may provide links to third party websites for your convenience and information. Third party websites will be governed by their own terms and conditions. Hexagon Geospatial does not endorse companies or products to which it links.

Third party websites are owned and operated by independent parties over which Hexagon Geospatial has no control. Hexagon Geospatial shall not have any liability resulting from your use of the third party website. Any link you make to or from the third party website will be at your own risk and any information you share with the third party website will be subject to the terms of the third party website, including those relating to confidentiality, data privacy, and security.

#### Trademarks

The trademarks, logos and service marks ("Marks") displayed in this Document are the property of Hexagon Geospatial, Intergraph or other third parties. Users are not permitted to use Marks without the prior written consent of Hexagon Geospatial, Intergraph or the third party that owns the Mark. "Intergraph" is a registered trademark of Intergraph Corporation in the United States and in other countries. Other brands and product names are trademarks of their respective owners.

Find additional trademark information.

#### Procedure For Making Claims Of Copyright Infringement



Notifications of claimed copyright infringement should be sent to Hexagon Geospatial by mail at the following address: Intergraph Corporation, Attn: Intergraph Legal Department, P.O. Box 240000, Huntsville, Alabama 35824.

#### US Government Restricted Right

Materials are provided with "RESTRICTED RIGHTS." Use, duplication, or disclosure of Materials by the U.S. Government is subject to restrictions as set forth in FAR 52.227-14 and DFARS 252.227-7013 et seq. or successor provisions thereto. Use of Materials by the Government constitutes acknowledgement of Hexagon Geospatial or Intergraph's proprietary rights therein.

#### International Use

You may not use or export Materials in violation of U.S. export laws and regulations. Hexagon Geospatial makes no representation that Materials are appropriate or available for use in every country, and access to them from territories where their content is illegal is prohibited.

Hexagon Geospatial provides access to Hexagon Geospatial international data and, therefore, may contain references or cross references to Hexagon Geospatial products, programs and services that are not announced in your country. These references do not imply that Hexagon Geospatial intends to announce such products, programs or services in your country.

The Materials are subject to U.S. export control and economic sanctions laws and regulations and you agree to comply strictly with all such laws and regulations. In addition, you represent and warrant that you are not a national of, or otherwise located within, a country subject to U.S. economic sanctions (including without limitation Iran, Syria, Sudan, Cuba, and North Korea) and that you are not otherwise prohibited from receiving or accessing the Materials under U.S. export control and economic sanctions laws and regulations. Hexagon Geospatial makes no representation that the Materials are appropriate or available for use in every country, and access to them from territories where their content is illegal is prohibited. All rights to use the Materials are granted on condition that such rights are forfeited if you fail to comply with the terms of this agreement.

#### Revisions

Hexagon Geospatial reserves the right to revise these Terms at any time. You are responsible for regularly reviewing these Terms. Your continued use of this Document after the effective date of such changes constitutes your acceptance of and agreement to such changes.

#### Applicable Law

This Document is created and controlled by Hexagon Geospatial in the State of Alabama. As such, the laws of the State of Alabama will govern these Terms, without giving effect to any principles of conflicts of law. You hereby irrevocably and unconditionally consent to submit to the exclusive jurisdiction of the United States District Court for the Northern District of Alabama, Northeastern Division, or the Circuit Court for Madison County, Alabama for any litigation arising out of or relating to use of this Document (and agree not to commence any litigation relating thereto except in such courts), waive any objection to the laying of venue of any such litigation in such Courts and agree not to plead or claim in any such Courts that such litigation brought therein has been brought in an inconvenient forum. Some jurisdictions do not allow the exclusions or limitations set forth in these Terms. Such exclusions or limitations shall apply in all jurisdictions to the maximum extent allowed by applicable law.

#### Questions

[Contact us](#) with any questions regarding these Terms.

