



GEOMEDIA PDF

INSTALLATION GUIDE

Version 16.5

March 2018

Product Documentation Copyright and Terms of Use

Copyright

© 2018 Hexagon AB and/or its subsidiaries and affiliates. All rights reserved. Hexagon has registered trademarks in many countries throughout the world. Visit the *Trademarks Page* <http://www.hexagongeospatial.com/legal/trademarks> for information about the countries in which the trademarks are registered. See Product Page and Acknowledgments for more information.

Product Documentation Terms of Use

PLEASE READ THESE TERMS CAREFULLY BEFORE USING HEXAGON GEOSPATIAL'S DOCUMENTATION ("DOCUMENT"). USE OF THIS DOCUMENT INDICATES ACCEPTANCE OF THIS AGREEMENT WITHOUT MODIFICATION. IF YOU DO NOT AGREE TO THE TERMS HEREOF ("TERMS"), DO NOT USE THIS DOCUMENT.

Use Of This Document

All materials in this Document are copyrighted and any unauthorized use may violate worldwide copyright, trademark, and other laws. Subject to the terms of this Agreement, Hexagon Geospatial (a Division of Intergraph Corporation) and Intergraph's subsidiaries ("Intergraph") hereby authorize you to reproduce this Document solely for your personal, non-commercial use. In consideration of this authorization, you agree to retain all copyright and other proprietary notices contained therein. You may not modify the Materials in any way or reproduce or publicly display, perform, or distribute or otherwise use them for any public or commercial purpose, except as specifically authorized in a separate agreement with Hexagon Geospatial.

The foregoing authorization specifically excludes content or material bearing a copyright notice or attribution of rights of a third party. Except as expressly provided above, nothing contained herein shall be construed as conferring by implication, estoppel or otherwise any license or right under any copyright, patent or trademark of Hexagon Geospatial or Intergraph or any third party.

If you breach any of these Terms, your authorization to use this Document automatically terminates. Upon termination, you will immediately destroy any downloaded or printed Materials in your possession or control.

Disclaimers

ALL MATERIALS SUPPLIED HEREUNDER ARE PROVIDED "AS IS", WITHOUT WARRANTY OF ANY KIND, EITHER EXPRESSED OR IMPLIED, INCLUDING, BUT NOT LIMITED TO, ANY IMPLIED WARRANTIES OF MERCHANTABILITY, FITNESS FOR A PARTICULAR PURPOSE, OR NON-INFRINGEMENT. Hexagon Geospatial does not warrant that the content of this Document will be error-free, that defects will be corrected, or that any Hexagon Geospatial Website or the services that make Materials available are free of viruses or other harmful components.

Hexagon Geospatial does not warrant the accuracy and completeness of this Document. Hexagon Geospatial may make changes to this Document at any time without notice.

Limitation Of Liability

IN NO EVENT SHALL HEXAGON GEOSPATIAL BE LIABLE FOR ANY DIRECT, INDIRECT, INCIDENTAL, SPECIAL OR CONSEQUENTIAL DAMAGES, OR DAMAGES FOR LOSS OF PROFITS, REVENUE, DATA OR USE, INCURRED BY YOU OR ANY THIRD PARTY, WHETHER IN AN ACTION IN CONTRACT OR TORT, ARISING FROM YOUR ACCESS TO, OR USE OF, THIS DOCUMENT.

Indemnification

You agree to defend, indemnify, and hold harmless Hexagon Geospatial, its officers, directors, employees, and agents from and against any and all claims, liabilities, damages, losses or expense, including reasonable attorneys' fees and costs, arising out of or in any way connected with your access to or use of this Document.

Use Of Software

Use of software described in this Document is subject to the terms of the end user license agreement that accompanies the software, if any. You may not download or install any software that is accompanied by or includes an end user license agreement unless you have read and accepted the terms of such license agreement. Any such software is the copyrighted work of Hexagon Geospatial, Intergraph or its licensors. Portions of the user interface copyright 2012-2018 Telerik AD.

Links To Third Party Websites

This Document may provide links to third party websites for your convenience and information. Third party websites will be governed by their own terms and conditions. Hexagon Geospatial does not endorse companies or products to which it links.

Third party websites are owned and operated by independent parties over which Hexagon Geospatial has no control. Hexagon Geospatial shall not have any liability resulting from your use of the third party website. Any link you make to or from the third party website will be at your own risk and any information you share with the third party website will be subject to the terms of the third party website, including those relating to confidentiality, data privacy, and security.

Trademarks

The trademarks, logos and service marks ("Marks") displayed in this Document are the property of Hexagon Geospatial, Intergraph or other third parties. Users are not permitted to use Marks without the prior written consent of Hexagon Geospatial, Intergraph or the third party that owns the Mark. "Intergraph" is a registered trademark of Intergraph Corporation in the United States and in other countries. Other brands and product names are trademarks of their respective owners.

Find additional *trademark information* <http://www.hexagongeospatial.com/legal/trademarks>.

Procedure For Making Claims Of Copyright Infringement

Notifications of claimed copyright infringement should be sent to Hexagon Geospatial by mail at the following address: Intergraph Corporation, Attn: Intergraph Legal Department, P.O. Box 240000, Huntsville, Alabama 35824.

US Government Restricted Right

Materials are provided with "RESTRICTED RIGHTS." Use, duplication, or disclosure of Materials by the U.S. Government is subject to restrictions as set forth in FAR 52.227-14 and DFARS 252.227-7013 et seq. or successor provisions thereto. Use of Materials by the Government constitutes acknowledgment of Hexagon Geospatial or Intergraph's proprietary rights therein.

International Use

You may not use or export Materials in violation of U.S. export laws and regulations. Hexagon Geospatial makes no representation that Materials are appropriate or available for use in every country, and access to them from territories where their content is illegal is prohibited.

Hexagon Geospatial provides access to Hexagon Geospatial international data and, therefore, may contain references or cross references to Hexagon Geospatial products, programs and services that

are not announced in your country. These references do not imply that Hexagon Geospatial intends to announce such products, programs or services in your country.

The Materials are subject to U.S. export control and economic sanctions laws and regulations and you agree to comply strictly with all such laws and regulations. In addition, you represent and warrant that you are not a national of, or otherwise located within, a country subject to U.S. economic sanctions (including without limitation Iran, Syria, Sudan, Cuba, and North Korea) and that you are not otherwise prohibited from receiving or accessing the Materials under U.S. export control and economic sanctions laws and regulations. Hexagon Geospatial makes no representation that the Materials are appropriate or available for use in every country, and access to them from territories where their content is illegal is prohibited. All rights to use the Materials are granted on condition that such rights are forfeited if you fail to comply with the terms of this agreement.

Revisions

Hexagon Geospatial reserves the right to revise these Terms at any time. You are responsible for regularly reviewing these Terms. Your continued use of this Document after the effective date of such changes constitutes your acceptance of and agreement to such changes.

Applicable Law

This Document is created and controlled by Hexagon Geospatial in the State of Alabama. As such, the laws of the State of Alabama will govern these Terms, without giving effect to any principles of conflicts of law. You hereby irrevocably and unconditionally consent to submit to the exclusive jurisdiction of the United States District Court for the Northern District of Alabama, Northeastern Division, or the Circuit Court for Madison County, Alabama for any litigation arising out of or relating to use of this Document (and agree not to commence any litigation relating thereto except in such courts), waive any objection to the laying of venue of any such litigation in such Courts and agree not to plead or claim in any such Courts that such litigation brought therein has been brought in an inconvenient forum. Some jurisdictions do not allow the exclusions or limitations set forth in these Terms. Such exclusions or limitations shall apply in all jurisdictions to the maximum extent allowed by applicable law.

Questions

Contact us <https://www.hexagongeospatial.com/about-us/our-company/contact-us> with any questions regarding these Terms.

About Us

Hexagon Geospatial helps you make sense of the dynamically changing world. We enable you to envision, experience and communicate geographic information. Our technology provides you the form to design, develop and deliver solutions that solve complex, real-world challenges. Ultimately, this is realized through our creative software products and platforms.

CUSTOMERS. Globally, a wide variety of organizations rely on our products daily including local, state and national mapping agencies, transportation departments, defense organizations, engineering and utility companies, and businesses serving agriculture and natural resource needs. Our portfolio enables these organizations to holistically understand change and make clear, reliable decisions.

TECHNOLOGY. Our priority is to deliver products, platforms and solutions that make our customers successful. Hexagon Geospatial is focused on developing technology that displays and interprets information in a personalized, meaningful way. We enable you to transform location-based content into dynamic and useable business information that creatively conveys the answers you need.

PARTNERS. As an organization, we are partner-focused, working alongside our channel to ensure we succeed together. We provide the right platforms, products, and support to our business partners so that they may successfully deliver sophisticated solutions for their customers. We recognize that we greatly extend our reach and influence by cultivating channel partner relationships both inside and outside of *Hexagon* (<http://www.hexagon.com>).

TEAM. As an employer, we recognize that the success of our business is the result of our highly motivated and collaborative staff. At Hexagon Geospatial, we celebrate a diverse set of people and talents, and we respect people for who they are and the wealth of knowledge they bring to the table. We retain talent by fostering individual development and ensuring frequent opportunities to learn and grow.

HEXAGON. Hexagon's solutions integrate sensors, software, domain knowledge and customer workflows into intelligent information ecosystems that deliver actionable information. They are used in a broad range of vital industries.

Hexagon (Nasdaq Stockholm: HEXA B) has approximately 18,000 employees in 50 countries and net sales of approximately 3.3bn USD. Learn more at *hexagon.com* (<http://www.hexagon.com>) and follow us @HexagonAB <https://twitter.com/HexagonAB>.

Contents

Product Documentation Copyright and Terms of Use	2
About Us.....	5
Overview GeoMedia PDF Installation	9
Before You Install GeoMedia PDF	9
GeoMedia PDF Documentation Set.....	9
Installing GeoMedia PDF Using Hexagon Geospatial Setup Manager	10
Overview of Hexagon Geospatial Setup Manager.....	10
Hexagon Geospatial Setup Manager User Interface	10
Dialog Box Options.....	12
Icons	13
Installing GeoMedia PDF	14
To Install GeoMedia PDF	14
Installing Languages and Changing the Runtime Language of GeoMedia.....	22
Licensing GeoMedia PDF	23
Starting GeoMedia PDF.....	23
Removing GeoMedia PDF.....	24
To Remove GeoMedia Products with Hexagon Geospatial Setup Manager	24
To Remove GeoMedia Products with Control Panel.....	24
Removing Language Packs	25
To remove Language Pack with Hexagon Geospatial Setup Manager:	25
To remove Language Pack with Control Panel:	25
Troubleshooting Installation Using Logs	25
Enabling Microsoft Windows Installer (MSI) Logging	26
Creating an MSI Log for One Specific Installation	26
Logging the Installation of Product XYZ	26

Contents

Logging the Patching of a Product that Already Has Been Installed	27
Viewing and Exporting Application Event Log Information	27
Hexagon Geospatial Setup Manager Logging	27
Tips for Resolving Issues in Installation Log	27
Component Based Servicing Log	27
Windows Installer SDK Tools	28
Technical Notes	28
Issue with Specific Projections	28
Installing GeoMedia PDF in Silent Mode	29
Installing and Configuring GeoMedia PDF	29
Prerequisite Installations	29
Basic Parameters for Hexagon Geospatial Setup Manager	29
Installable GeoMedia Names Table	30
Installable GeoMedia PDF Language Names Table (if available)	30
Operation and Optional Arguments Parameters Table	30
Installing GeoMedia PDF – Silent Mode	31
Installing GeoMedia Language Packs – Silent Mode	31
Complete Set of Parameters for Hexagon Geospatial Setup Manager	32
Installing GeoMedia PDF – Batch Script	35
Additional Examples	36
Remove Software	36
Override the Default Installation Location	36
Get Install Status	36
Uninstall a Removable Update	36
Repair an Existing Installation	37
GeoMedia PDF Installer Features	37

Complementary Software	37
Install	37
Get Setup Status	37
Uninstall Setup	37
Index	38
Technical Support and Information	40

Overview GeoMedia PDF Installation

The GeoMedia PDF Installation Guide in conjunction with the GeoMedia Installation Guide provides information for installing the product.

Before You Install GeoMedia PDF

Verify that your system meets or exceeds the requirements for GeoMedia PDF listed in the GeoMedia PDF Release Guide document (accessed from the **Hexagon Geospatial Setup Manager** dialog box or the Support page on the Customer Support Portal www.hexagongeospatial.com/support (<http://www.hexagongeospatial.com/support>). GeoMedia PDF runs on Windows® 7 or Windows® 10 64-bit operating systems.

Verify that you have administrator privileges on the system where you want to install GeoMedia PDF.

Verify that previous versions of GeoMedia and GeoMedia add-ons have been removed.

Verify that the required version of GeoMedia Desktop Essentials, Advantage or Professional tier has been installed.

Turn off the User Account Control (UAC). The UAC security measures can be re-instated after installation of the product.

GeoMedia PDF Documentation Set

The following documents are installed (or are available for installation) with the product, or they are provided on the delivery media:

Document	Description
GeoMedia PDF Help	A CHM file that contains instructions for using tools and commands.
GeoMedia PDF Release Guide	A PDF file that lists the enhancements, product defects that have been fixed, and system configuration requirements for the current release.
GeoMedia PDF Installation Guide	A PDF file that contains instructions for installing the product.

To access these documents, select **Start > All Programs > Hexagon GeoMedia PDF 2018**, select the links on the Hexagon Setup Manager dialog, or look in the *C:\Program Files (x86)\Hexagon\GeoMedia PDF* folder. You can also locate them on the Customer Support Portal www.hexagongeospatial.com/support (<http://www.hexagongeospatial.com/support>) for your product.



Installing GeoMedia PDF Using Hexagon Geospatial Setup Manager

GeoMedia PDF uses **Hexagon Geospatial Setup Manager** to install the software.

Overview of Hexagon Geospatial Setup Manager

Hexagon Geospatial Setup Manager (*Setup.exe*) is a tool that you use to install and maintain Hexagon Geospatial software. Once the software is installed, you can also use the tool to perform the following software maintenance tasks:

- Modify
- Repair
- Remove
- Run configuration processes

If the following options are available for your site, you can also use **Hexagon Geospatial Setup Manager** to:

- Install complementary software
- Run the installation process in batch or silent mode.

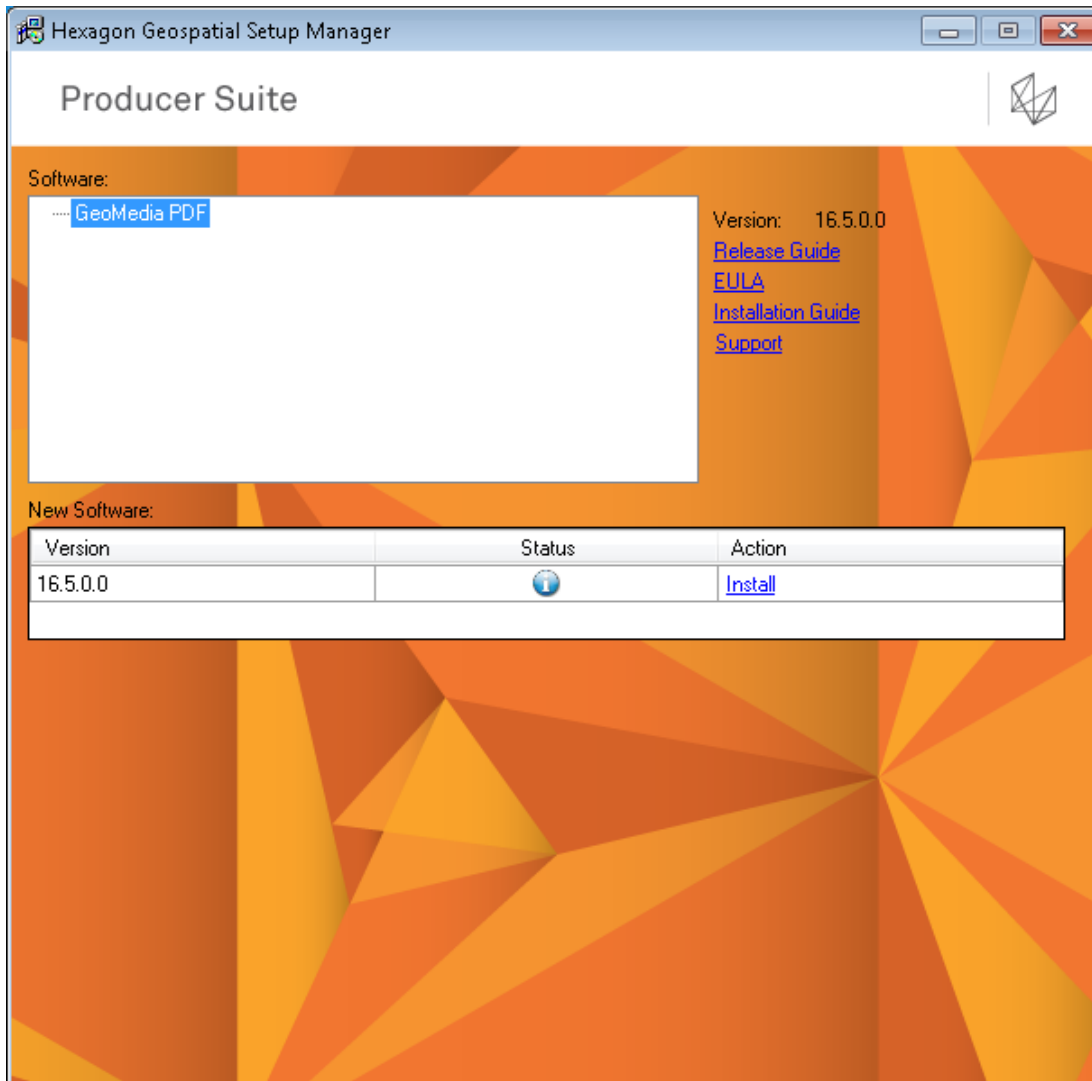
NOTE If you are an application developer who wants to create a complementary software setup for **Hexagon Geospatial Setup Manager**, see *Complementary Software* in *Installing GeoMedia in Silent Mode* (see "Installing GeoMedia PDF in Silent Mode" on page 29).

Hexagon Geospatial Setup Manager User Interface

The Hexagon Geospatial Setup Manager dialog opens when you double click *Setup.exe* to start the installation process.



See *Installing GeoMedia PDF* (on page 14) for the installation workflow.



Dialog Box Options

Software

The **Software** box displays the list of products that you can install. Select these one at a time to install software or modify, repair, or remove software. When you select a product, the user interface updates to display the current status of the software installation, which is reflected in the **New Software** or **Installed Software** list.

Version

To the right of the **Software** box is the **Version** number of the selected product.

Documentation Links

Listed under the **Version** number are links that provide access to information about the selected software. The **Support** link takes you directly to the *Customer Support Portal* www.hexagongeospatial.com/support (<http://www.hexagongeospatial.com/support>) website. If a document is not available for the selected software the corresponding link is disabled.

New Software or Installed Software

If no software products have been installed, the **New Software** box is displayed so you can install new software. Once software is installed, the label of this box changes to **Installed Software**. The **Version**, **Status**, and **Action** columns are explained below:

Version	Status	Action
<p>If you are installing software, this field displays the version available for installation.</p> <p>If you are modifying, repairing, or removing software, this field displays the version currently installed on your computer. This is a read-only field.</p>	<p>Displays an icon reflecting the status of the software you selected. See the Icons section below for more information.</p>	<p>The links displayed under Action change to reflect what actions you can perform during the installation or modify, repair, or remove process.</p>

Manager

Configuration

NOTE This box may not be implemented for all product installations.

If additional configuration steps are required for your software, the **Configuration** box opens after installation is complete. Select the application from the list and click **Configure**.




Complementary Software

Complementary software is software that is useful for or needed to run with your Hexagon Geospatial software. If complementary software is available for your site, the **Complementary Software** box opens after installation is complete. Select the application from the list and click **Install**.

NOTE Complementary Software is available for your site only if an application developer creates it. For more information, see *Complementary Software in Installing GeoMedia in Silent Mode* (see "Installing GeoMedia PDF in Silent Mode" on page 29).

Icons

The following icons appear in the **Status** list. These icons and their corresponding tooltips change to reflect the current status of the installation or modify, repair, or remove process.

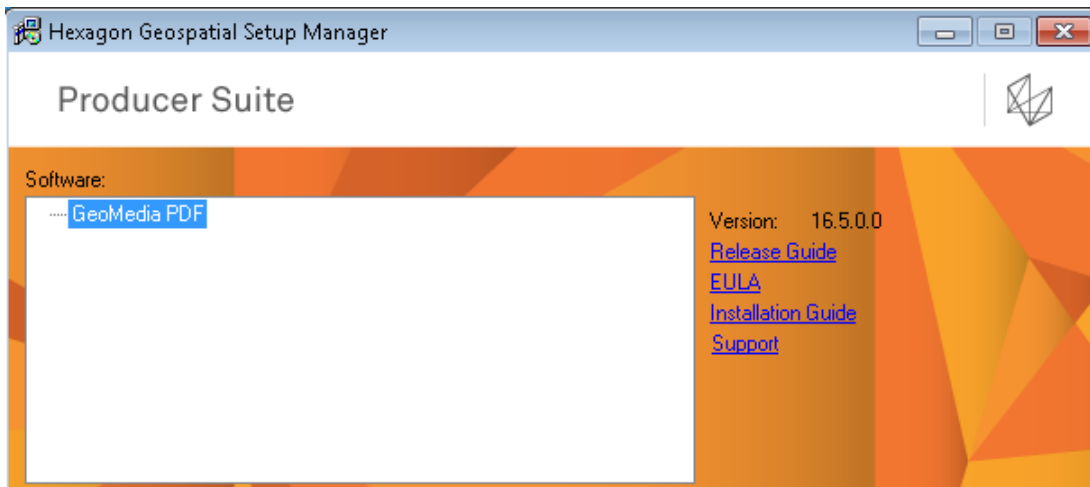
Icon	New or Installed Software	Configuration	Complementary Software
	Indicates the selected software is not installed. Or Indicates an installation failure. Check the Event Log for information.	Indicates the installed application of the selected software is not configured. Or Indicates a configuration failure. Check the Event Log for information.	Indicates the complementary software is available but is not installed. Or Indicates an installation failure. Check the Event Log for information.
	Installation is in progress.	Configuration is in progress.	Installation is in progress.
	Installation is successful.	Configuration is	Installation is successful.

Icon	New or Installed Software	Configuration	Complementary Software
		successful.	

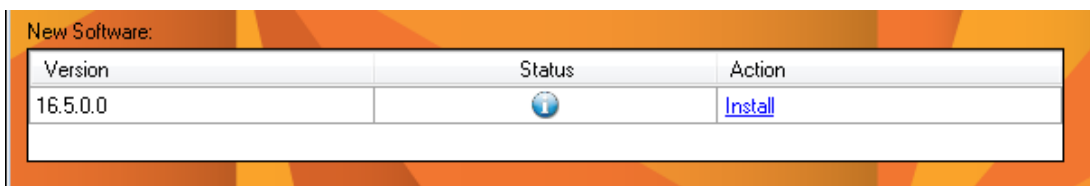
Installing GeoMedia PDF

To Install GeoMedia PDF

1. From your delivery media, right click *Setup.exe* and select **Run as administrator**.
2. Select the appropriate product from the list of software.



3. *Optional:* Click a link to the right of the **Software** list box to open and review documentation as required for the selected product.
4. In the **New Software** box, click **Install** under **Action**.



The installation process begins for the selected software by displaying the splash screen and starting

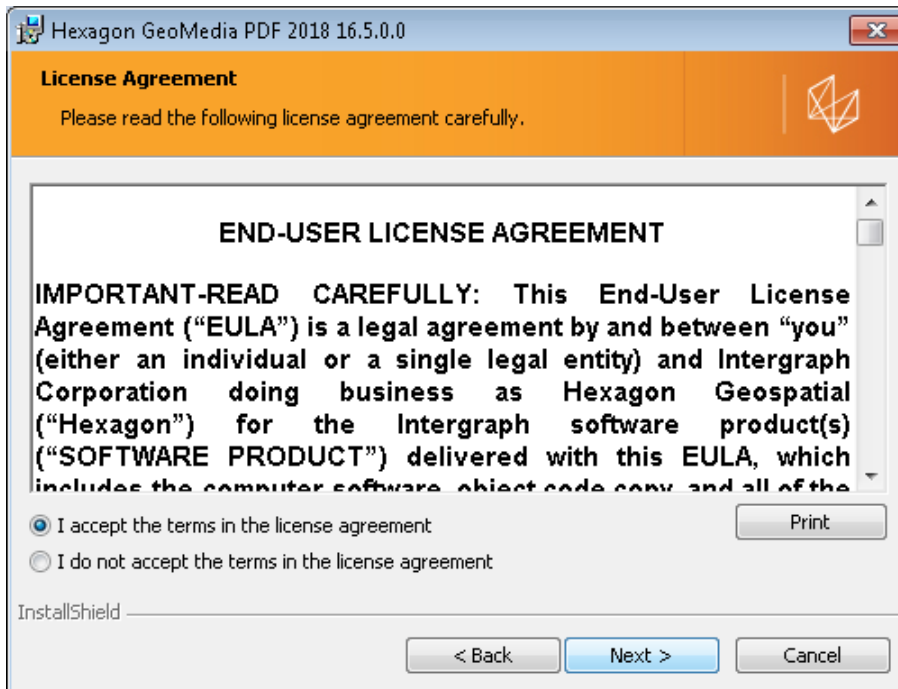
the InstallShield Wizard.

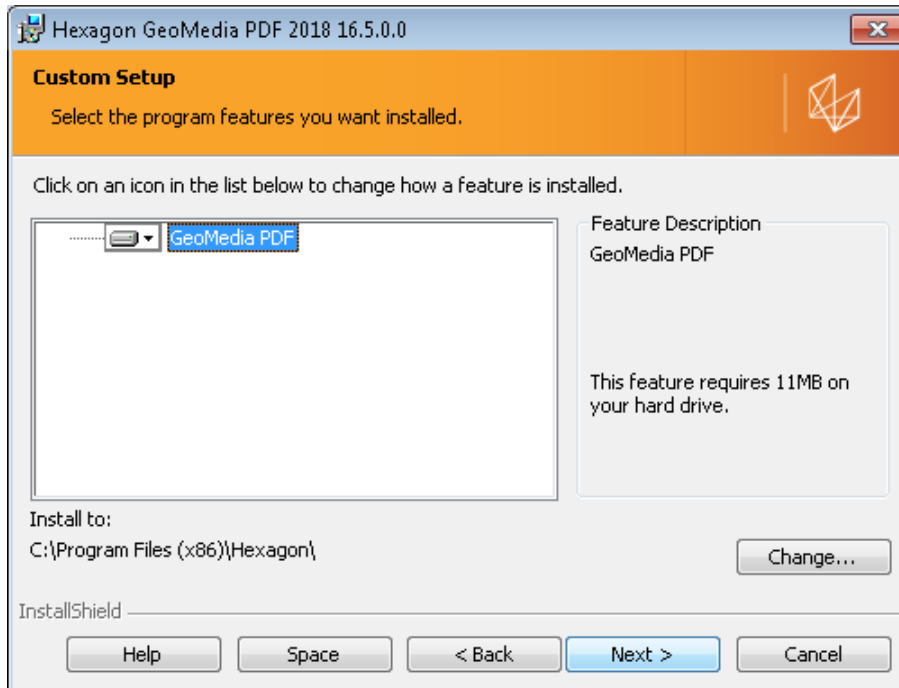
NOTE Once software is installed, the **New Software** title changes to **Installed Software**, and the **Action** column displays **Modify, repair, or remove** for the selected software.

5. Click **Next** on the InstallShield Wizard Welcome screen.

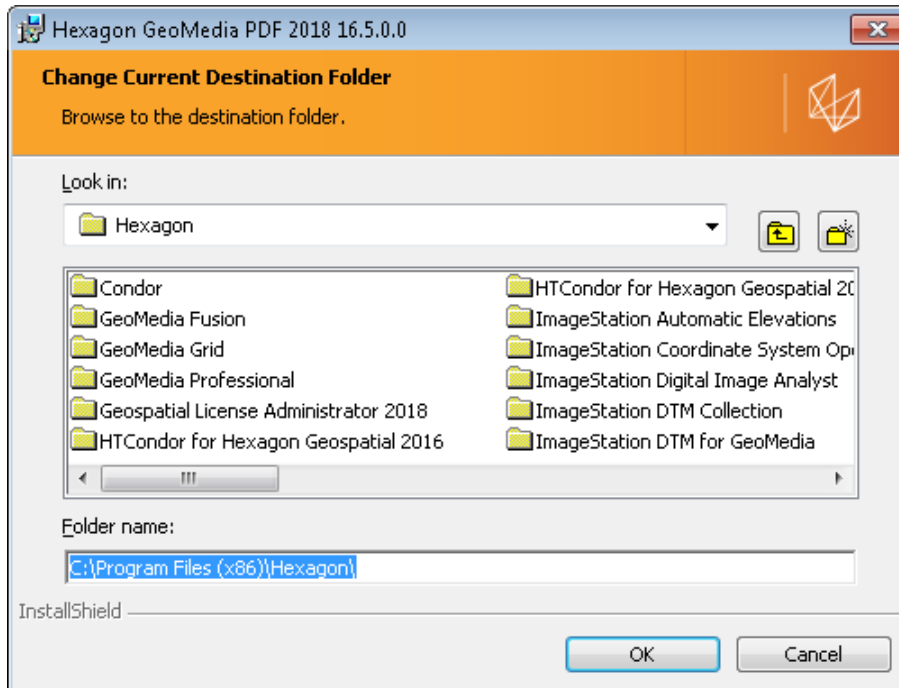


6. Accept the terms in the license agreement, and then click **Next** to advance to the **Custom Setup** dialog.





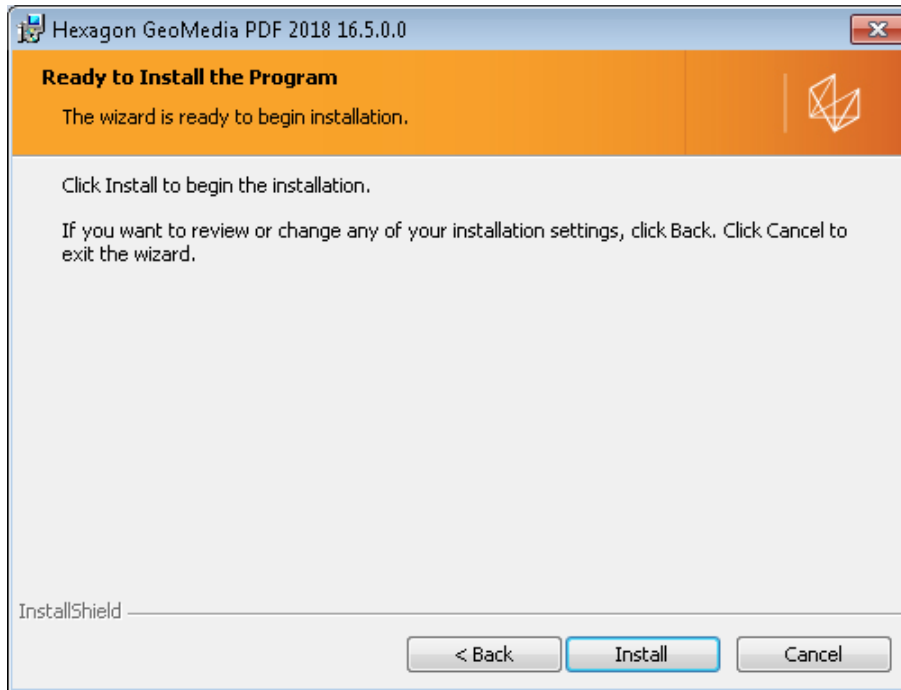
7. *Optional:* Click **Change** on the **Custom Setup** dialog box to change the installation folder and or drive on the **Change Current Destination Folder** dialog box, and then click **OK** on that dialog to return to the **Custom Setup** dialog.



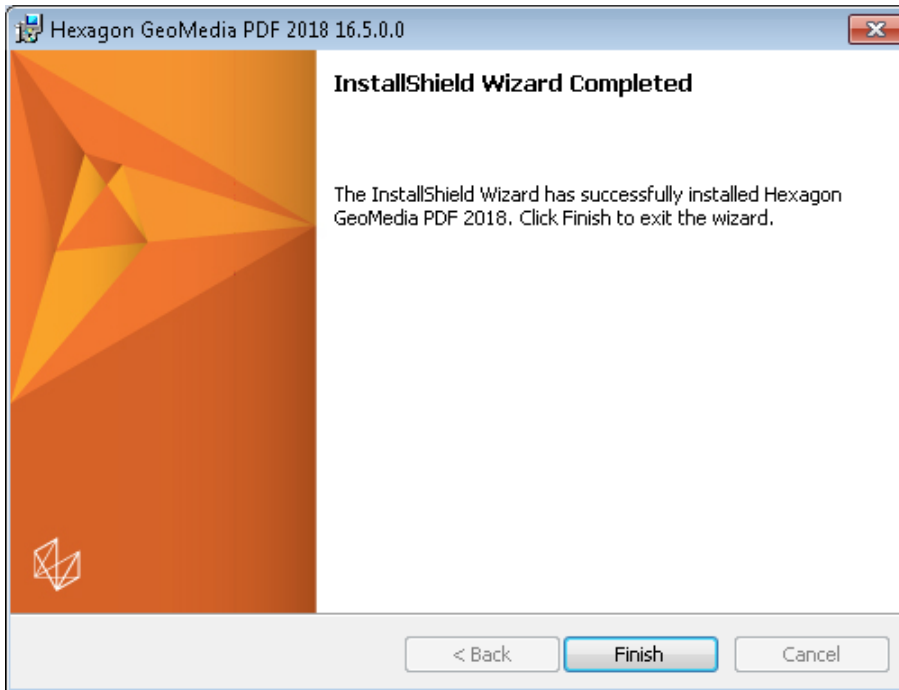
OR

Continue to the next step without changing the destination folder.

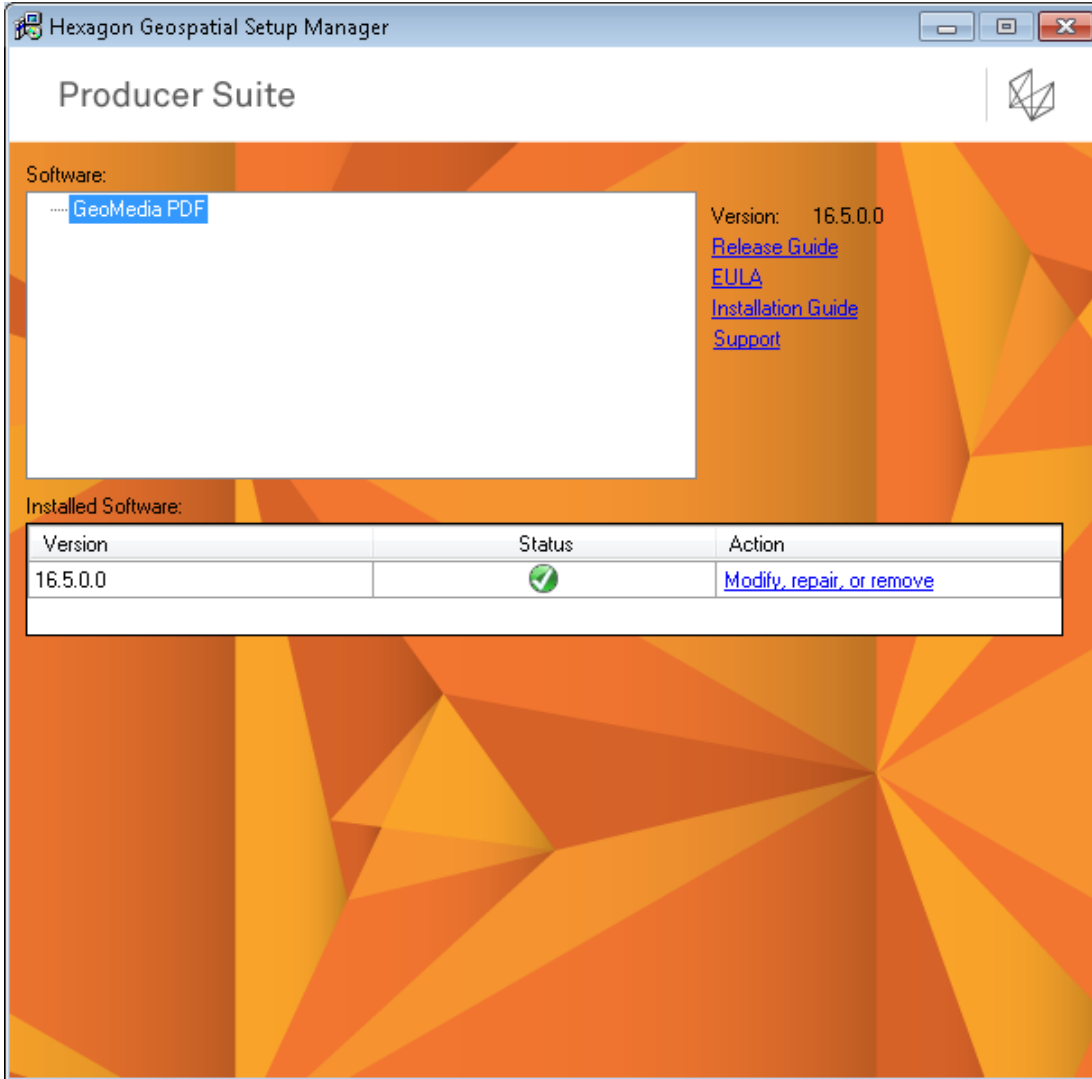
8. Click **Next** on the **Custom Setup** dialog.
9. Click **Install** to start installation.



10. When the product is installed, click **Finish**.



The **New Software** title on the **Hexagon Geospatial Setup Manager** dialog box changes to **Installed Software**, and the **Action** column displays **Modify, repair, or remove** for the selected software.



Installing Languages and Changing the Runtime Language of GeoMedia


The GeoMedia product installation does not provide additional language options. GeoMedia product language options are provided as Language Packs on the *Hexagon Geospatial Product Download Portal* <http://download.hexagongeospatial.com/> and can be downloaded and installed as necessary. If GeoMedia Language Packs have been installed, the GeoMedia Configuration Wizard will recognize the installed language and provide them as an option on the **GeoMedia <product> Language** dialog box.



Language Packs are specific to versions of the GeoMedia product installation. They require that the corresponding version of GeoMedia product has been installed on the machine prior to the installation of any Language Packs.

GeoMedia PDF Language Pack installation requires that the corresponding language pack for GeoMedia Desktop has been installed.

To install languages:

1. Download the required Language Pack from the *Hexagon Geospatial Product Download Portal* <http://download.hexagongeospatial.com/>.
2. Install the downloaded Language Pack by selecting Setup.exe (*Hexagon Geospatial Setup Manager*).
3. When the installation is finished, the Status icon on *Hexagon Geospatial Setup Manager* will change to a green check mark .

To change language:

If you want to change the runtime language:

1. Run GeoMedia Desktop Configuration Wizard from Start menu.
2. Select the required language from the **Installed GeoMedia Desktop Languages** list on the **GeoMedia Desktop Language** dialog box.
3. Upon completion of defining the required language in the Configuration Wizard, click **Finish**.



- This will change the runtime language of GeoMedia Desktop and GeoMedia PDF (and any other GeoMedia add-on products).
- Only installed languages are available for selection as the runtime language in the GeoMedia Configuration Wizard.
- If the corresponding language pack is not available (installed) for the add-on product (such as GeoMedia PDF), then language of the add-on product will revert to English.



Region and Language settings of the Operating System, which are set via the Control Panel, must correspond to the runtime language in order to run GeoMedia with the selected language. The settings are on the **Formats** tab > **Format**, and the **Administrative** tab > **Language for non-Unicode programs**.

Licensing GeoMedia PDF

With the Power Portfolio 2018 release, licenses are no longer based on Certificate-file based technology. Instead, licenses are based on Activation IDs so that customers can activate their products without having to provide Host IDs or other hardware-related parameters. Customers can also re-host without emailing the licensing team to assist. The Power Portfolio 2018 release also includes improved tools to make it easier to install licenses, set up license servers, and provide more professional error handling. Finally, the Power Portfolio 2018 release has improved customer notification in the products, such as an “end of subscription” message in the Start-up screen. These more secure and automated processes, along with a new licensing portal, provide a better customer experience.

You can install **Geospatial Licensing 2018** from the Supporting Software section of the product delivery media and use **Geospatial Licensing Administrator 2018** to set up and manage a concurrent license server and other license resources. See the **Geospatial Licensing 2018** Help file for more information.

Please visit our *licensing web site* (<https://www.hexagongeospatial.com/resources/support/licensing>) to generate or to manage your licenses. There are help topics on this page to assist you if you have difficulty in generating or managing your license. There are also useful eTraining videos at bottom of this page.

Starting GeoMedia PDF

To start working with GeoMedia PDF product:

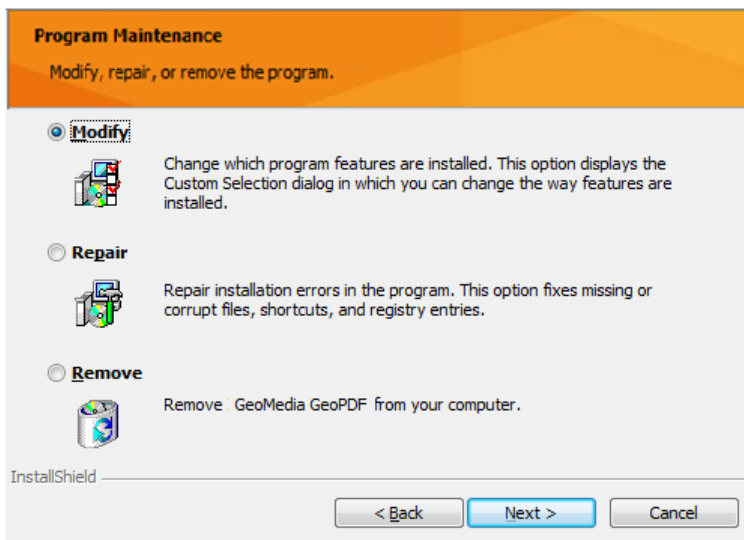
- Select **Start > All Programs > Hexagon GeoMedia Desktop 2018 > GeoMedia Professional (or Advantage, or Essentials)**.
- Open a GeoWorkspace, and select the **PDF** tab from the GeoMedia ribbon bar to display the command panel.

Removing GeoMedia PDF

You can remove GeoMedia and add-on products with either Hexagon Geospatial Setup Manager or Windows Control Panel; however, Hexagon Geospatial Setup Manager is the recommended method.

To Remove GeoMedia Products with Hexagon Geospatial Setup Manager

1. From your delivery media, right click *Setup.exe* and select **Run as administrator**.
2. In the **Software** list box, select the product you want to remove.
3. In the **Installed Software** box **Action** list, click **Modify, repair, or remove**.
4. When the Wizard dialog box opens, click **Next** to open the **Program Maintenance** dialog.
5. *Carefully* read what the **Remove** option does, and if appropriate, select the **Remove** option, and then click **Next**.



6. Follow the prompts to remove the product.

To Remove GeoMedia Products with Control Panel

1. From the **Start** menu, navigate to **Control Panel**.

2. Select **Programs > Uninstall a program**.
3. On the **Uninstall or change a program** dialog box, select the product to remove, and then click **Uninstall**.

Removing Language Packs

You can remove Language Packs with either **Hexagon Geospatial Setup Manager** or Windows **Control Panel**; however, **Hexagon Geospatial Setup Manager** is the recommended method.

To remove Language Pack with Hexagon Geospatial Setup Manager:

1. From your delivery media, right click *Setup.exe* and select **Run as administrator**.
2. In the **Installed Software** box **Action** list, click **Modify, repair, or remove**.
3. When the Wizard dialog opens, click **Next** to open the Program **Maintenance** dialog.
4. Carefully read what the Remove option does, and if appropriate, select the **Remove** option, and click **Next**.
5. Follow the prompts to remove the product.

To remove Language Pack with Control Panel:

1. From the **Start** menu, navigate to **Control Panel**.
2. If viewed by Category, select **Programs > Programs and Features**.
OR
If viewed by Large Icons or Small Icons, select **Programs and Features**.
3. On the **Uninstall or change a program** dialog box, select the Language Pack to remove, and then click **Uninstall** or right click the Language Pack and select **Uninstall**.

Troubleshooting Installation Using Logs

When an installer fails, there are a few options to get more information and act upon it:

- Create a Log file for the installation -- This can be requested by using a registry key or by specifying command-line parameters.

- Examine (and possibly Export) the Application Event Log -- This gives you access to OS events generated during installation and configuration of a product.

You can generate MSI (Windows Installer) and Application Event Logs.

NOTE Turning on MSI Logging from the registry, rather than from the command line, is recommended.

Enabling Microsoft Windows Installer (MSI) Logging

You can enable MSI logging for every installation action that happens on your system.

1. From the Microsoft Windows **Start** menu, click **Run**, and type **regedit** to open the Registry Editor.
2. Find or add the following subkey Installer in the Windows registry: **HKEY_LOCAL_MACHINE > Software > Policies > Microsoft > Windows > Installer**.

NOTE You may need to create the **Installer** key.

- a. Insert Debug as a REG_DWORD, and set its value to 7.
- b. Insert Logging as a REG_SZ, and set its value to voicewarmup.

Once the registry strings above have been created, every time you install, repair, modify, or remove, a log file will be created in the directory identified by your TEMP environment variable.

Creating an MSI Log for One Specific Installation

NOTE Turning on MSI Logging from the command line is a last choice effort.

It is highly preferred to use the registry key above to enable MSI logging because it allows you to use your standard install, uninstall, and repair workflows. The workflow below should only be used in special circumstances, for example, if you are not allowed to update the system registry, or you really only want to create the one MSI log, and you are confident you can reproduce your exact problem on the command line.

You can request a log for one specific installation if you know the specific command-line parameters that are required to reproduce your problem. You must be quite careful because entering wrong parameters (like omitting the ACCEPT_EULA switch required by the Install in Silent Mode process) can cause your command-line installation to fail for reasons unrelated to the problem you are investigating.

Logging the Installation of Product XYZ

```
msiexec /l*v "C:\1LogInstallation\logs\InstallationXYZ.log" /i  
"C:\msi\XYZ.MSI ACCEPT_EULA=1"
```

Logging the Patching of a Product that Already Has Been Installed

It is also possible to log the installation of an MSP (a patch or hot-fix).

```
msiexec /l*v MyProdMSP.log /p MyProduct.msp REINSTALL=ALL REINSTALLMODE=omus /qbb
```

Viewing and Exporting Application Event Log Information

Installation and configuration of software products generates some events that are seen by the Microsoft Windows Operating System itself. This type of logging is always available – you do not need to enable it. You can find it by launching the Event Viewer, and can save the events out for someone else to analyze.

1. Select **Start > Search programs and files**, and then type *eventvwr* to start the Event Viewer.
2. On the left, select **Windows Logs > Application**.
3. On the right, click **Save All Events As**.
4. Save the file as type **Event Files (*.evtx)**.

Hexagon Geospatial Setup Manager Logging

As noted above, logging from the registry key is highly preferred. In the case where logging from the command line is necessary, try one of these examples:

```
Setup.exe /s {SoftwareProductName} /ni ACCEPT_EULA=1 /L* MyLogFileName.log
```

```
Setup.exe /s {SoftwareProductName} /ni ACCEPT_EULA=1 /V"/L* MyLogFileName.log"
```

where {SoftwareProductName} is one of the Installable Applications under SoftwareProductName identified in Installable Application Names Table in Installing ProductName in Silent Mode document.

Tips for Resolving Issues in Installation Log

Component Based Servicing Log

The Component-Based Servicing Log can be helpful if you get a message like this in your Installation log:

```
MSI (s) (44:14) []: Assembly Error (sxs): To get more diagnostic information, enable the Component Based Servicing Log.
```

The Component Based Servicing Log is located in %windir%\logs\cbs\cbs.log
(C:\Windows\Logs\CBS)

To get the cbs log you may first need to set:

```
HKEY_LOCAL_MACHINE\Software\Microsoft\Windows\CurrentVersion\Component Based Servicing  
EnableLog=dword:00000001
```

Windows Installer SDK Tools

Willogutl.exe assists the analysis of log files from a Windows Installer installation, and it displays suggested solutions to errors that are found in a log file. You can use it to debug installation, repair and removal of a product.

For more information go to <http://msdn2.microsoft.com/en-us/library/aa372811.aspx>
(<http://msdn2.microsoft.com/en-us/library/aa372811.aspx> (see
<http://msdn2.microsoft.com/en-us/library/aa372811.aspx> -
<http://msdn2.microsoft.com/en-us/library/aa372811.aspx>)).

Technical Notes

The following topics provide explanations and/or workarounds for issues that operators may encounter.

Issue with Specific Projections

Altering parameters in certain projections will cause the projection information in the output geospatial PDF file to not match GeoMedia's Projection Parameters dialog. For the following projections, the listed parameters should be not altered.

Projection	Parameter
Equirectangle	Standard parallel
Mercator	Latitude of true scale

Oblique Mercator	Longitude of center
Robinson	Latitude of origin
Sinusoidal	Latitude of origin
Stereographic	Radius of standard circle, Central meridian, and Scale factor
Van der Grinten	Latitude of origin
Universal Polar Stereographic (UPS)	Latitude of true scale

Installing GeoMedia PDF in Silent Mode

This topic contains information and background useful for those who might want to use the Windows command line to deploy GeoMedia PDF and its related Update or Service Packs installers. Using the command line to deploy a product is often useful for those who want to execute silent installations or uninstallations of Windows Installer-based installers. To enable logging during an installation or uninstallation, there are some guidelines to follow, as noted in the *Troubleshooting Installation Problems Using Logs* topic.

This document assumes that you possess a basic knowledge of Windows command line scripting techniques, and are familiar with both Windows environment variables and the concepts of variables and properties.

Installing and Configuring GeoMedia PDF

Prerequisite Installations

GeoMedia Desktop

Basic Parameters for Hexagon Geospatial Setup Manager

To start the Hexagon Geospatial Setup Manager, which is *Setup.exe* in the root directory of your media, use the following syntax format for all commands:

```
setup.exe /s "GeoMedia PDF" Operation OptionalArguments
```

Operation and OptionalArguments are explained in the *Operation and Optional Arguments Parameters Table*.

Installable GeoMedia Names Table

These are the valid names for installable GeoMedia products. These names can be found in the ProductInfo.xml file for that GeoMedia product.

Name as it appears in the Hexagon Geospatial Setup Manager dialog box	SubfolderName under Repository folder on Media/DVD	SoftwareProductName	ConfigurableApplicationName
GeoMedia PDF	GeoMediaPDF	GeoMedia PDF	GeoMedia PDF

Installable GeoMedia PDF Language Names Table (if available)

These are the valid names for installable GeoMedia PDF Language Packs. These names can be found in the *ProductInfo.xml* file for that Language Pack.

Name as it appears in the Hexagon Geospatial Setup Manager dialog box	SubfolderName under Repository folder on Media/DVD	SoftwareProductName	ConfigurableApplicationName
GeoMedia PDF German Language Pack	GeoMediaPDF	GermanGMPDF	GermanGMPDF



Other available languages would be the same as <Language>GMPDF. Example: FrenchGMPDF.

Operation and Optional Arguments Parameters Table

Operation	Description	Optional Arguments
/n[i r s x]	Install/modify/upgrade, repair, status of install, remove software	Parameters to be passed to product setup, for example: ACCEPT_EULA=1
/u[s]	Launches customer-authored complementary software setup within the	Parameters to be passed to complementary

	script.	software setup.
--	---------	-----------------

Installing GeoMedia PDF – Silent Mode

There are a variety of scripting languages you can use to set up unattended installation. All the examples here demonstrate the batch script commands an administrator would need to install or modify GeoMedia PDF.

These batch script commands should be run from the root directory of the DVD or extracted zip file that contains the installation.

To install GeoMedia PDF, you need to start the Hexagon Geospatial Setup Manager.

To Install

```
setup.exe /s "GeoMedia PDF" /ni ACCEPT_EULA=1
```

Installing GeoMedia Language Packs – Silent Mode

There are a variety of scripting languages you can use to set up unattended installation. All the examples here demonstrate the batch script commands an administrator would need to install, configure, or modify Language Pack.

These batch script commands should be run from the root directory of the extracted zip file that contains the Language Pack installation.

To install and to configure GeoMedia Language Pack, you need to start the **Hexagon Geospatial Setup Manager** for Language pack installation and **Hexagon Geospatial Setup Manager** for GeoMedia configuration separately.

To install

```
setup.exe /S GermanGMPDF /ni ACCEPT_EULA=1 INSTALLDIR=\\\"<GeoMedia PDF Install folder>\\\"
```

Where

GermanGMPDF is SoftwareProductName as indicated in the **Installable GeoMedia Language pack Names Table**.

<GeoMedia PDF Install folder> is the install folder of GeoMedia PDF. The default folder is "C:\Program Files (x86)\Hexagon". If you use the different drive/folder for GeoMedia PDF installation, you must specify the same folder here such as "D:\Program Files (x86)\Hexagon"

To configure

For Language installation, the LCID (runtime language) will be set automatically upon the interactive Language Installation. The corresponding *Intergraph.GeoMedia.ConfigurationWizard.exe.config* for the language has been provided in the language folder.

On silent installation, we need to run the following command line to configure the language:

```
setup.exe /s GeoMedia /c GeoMedia
```

Where *Setup.exe* is root directory of the DVD or extracted zip file that contains the *GeoMedia product* installation, *GeoMedia* is SoftwareProductName and *GeoMedia* is ConfigurableApplicationName, as indicated in the **Installable GeoMedia Names Table in GeoMedia Desktop Installation Guide**.



The silent configuration for the language pack must run against *Setup.exe* for GeoMedia products, not *Setup.exe* for the Language Pack.

Complete Set of Parameters for Hexagon Geospatial Setup Manager

Parameters that are available for Hexagon Geospatial Setup Manager are listed in the following tables.

Option	Parameters	Description
/s		Specifies silent mode

Option	Parameters	Description
/n	[i r s x] OR [i] PROPERTY=VALUE	Installs/modifies/upgrades, repairs, returns installation status, or uninstalls the specified product. The /n option requires the /s option above.
		i Used to install new software, modify a current installation, or upgrade a previous installation. It is a default parameter. Windows Installer public property values can be appended at the end of this parameter. Spaces are not allowed between property name, =, and property value.

Option	Parameters	Description
		<p>When a property value contains spaces, you must enclose that property value with a backslash and double quotation mark (\").</p> <p>Example:</p> <pre>INSTALLDIR=\"c:\Test Installations\"</pre>
	r	Repairs existing software installation in silent mode.
	s	<p>Returns installation status. Valid exit code values are as follows:</p> <ul style="list-style-type: none"> ▪ 0 – Not installed. ▪ 1 – Installed version is up-to-date. ▪ 2 – Installed version is lower. ▪ 3 – Installed version is higher. ▪ -1 – Unable to find installation status.
	x	Uninstalls software in silent mode.
	product public properties	<p>The following are the public properties:</p> <pre>INSTALLDIR - Destination folder for the installation.</pre> <pre>ACCEPT_EULA - End user license agreement flag.</pre> <ul style="list-style-type: none"> ▪ 0 - The EULA is not accepted. This is the default value. ▪ 1 - The user has read and accepted the EULA. The software does not install until the value is 1.
	Windows Installer public properties	<p>Some commonly used standard Windows Installer public properties are as follows:</p> <pre>ADDLOCAL-Installs a list of selectable features delimited by commas, or ALL. Features are listed in the <i>GeoMedia PDF Installer Features</i> table. Feature names are case</pre>

Option	Parameters	Description
		<p>sensitive.</p> <p>REMOVE—Uninstalls a list of selectable features delimited by commas, or ALL. Features are listed in the <i>GeoMedia PDF Installer Features</i> table. Feature names are case sensitive.</p>

Option	Parameters	Description
/u	<p>[s]</p> <p>OR</p> <p>[<ParameterList>]</p>	<p>Launches customer-authored complementary software setup within the script <code>Repository\SubfolderName\ComplementarySoftwareSetup.wsf</code> or returns the complementary setup install status. Requires the /s option above.</p> <p>A complementary software setup program can support installation, repair, upgrade, and removal, including silent/batch mode support based on its requirements, and defines its own parameter list. A complementary software setup program can take parameters using command line arguments or a file (for example, .xml, .config or any other file type). The file name and location can be an input command line argument.</p> <p>See the <i>Complementary Software</i> section later in this appendix.</p> <p>When a property value contains spaces, you must enclose that property value with a backslash and double quotation mark (\").</p> <p>Example:</p> <pre>INSTALLDIR=\"c:\Test Installations\"</pre>
		<p>s</p> <p>Returns complementary software setup status. Valid exit code values are as follows:</p> <ul style="list-style-type: none"> ▪ 0 – Not configured.

Option	Parameters	Description
		<ul style="list-style-type: none"> ▪ 1 – Configured. ▪ -1 – Unable to find complementary software install status.

Installing GeoMedia PDF – Batch Script

The following is the usage of an example batch script:

```
C:\Temp\InstallGeoMediaPDF.bat FileShareName
```

Where, FileShareName is the file share name containing the GeoMedia PDF DVD image.

Example Batch Script

To perform a silent install of GeoMedia PDF by using a batch (.bat) file, copy the following code to a new file named *InstallGeoMediaPDF.bat*, and store it under *C:\Temp* folder.

```
@ECHO OFF
NET USE T: %1%
T:
setup.exe /s "GeoMedia" /ns
IF %ERRORLEVEL% EQU 0 GOTO Install
ECHO Install status: %ERRORLEVEL% Expecting 0.
ECHO GeoMedia must be installed before installing GeoMedia PDF.
GOTO EOF

:Install
ECHO Installing...
setup.exe /s "GeoMedia PDF" /ni ACCEPT_EULA=1
setup.exe /s "GeoMedia PDF" /ns
IF %ERRORLEVEL% EQU 1 GOTO EOF
ECHO Install status: %ERRORLEVEL% Expecting 1.
ECHO GeoMedia PDF did not install properly.
```

```
:EOF
C:
NET USE T: /DELETE /Y
EXIT /B 0
```

Additional Examples

You can modify the basic silent install syntax to perform additional installer functions such as removing or repairing software.

Remove Software

To completely uninstall GeoMedia PDF:

```
Setup.exe /s "GeoMedia PDF" /nx
```

Override the Default Installation Location

To install GeoMedia PDF at the '*C:\Test Installations*' folder:

```
Setup.exe /s "GeoMedia PDF" /ni ACCEPT_EULA=1 INSTALLDIR="\c:\Test
Installations\"
```

Get Install Status

To get the install status of GeoMedia PDF:

```
Setup.exe /s "GeoMedia PDF" /ns
echo GeoMedia PDF install status is %ERRORLEVEL%
```

Uninstall a Removable Update

To uninstall a removable update (Engineering Patch, Service Pack, and Minor Release) of GeoMedia PDF:

```
Setup.exe /s "GeoMedia PDF" /ni MSIPATCHREMOVE=UpdateID
```

The UpdateID is listed in *.\GeoMediaPDF\Program\UpdateInfo.txt*.

Repair an Existing Installation

To repair an existing installation of GeoMedia PDF:

```
Setup.exe /s "GeoMedia PDF" /nr
```

GeoMedia PDF Installer Features

Feature codes can be employed to install specific portions of the application. They are used in conjunction with the ADDLOCAL and REMOVE parameters listed in *Complete Set of Parameters for Hexagon Geospatial Setup Manager* table.

Feature ID	Subfeature of	Description	Required
GeoMedia PDF		Installs the required files needed to run GeoMedia PDF.	Yes

Complementary Software

This information applies if you have received complementary software along with your distribution of GeoMedia PDF.

Install

To install the complementary software:

```
Setup.exe /s "GeoMedia PDF" /ui
```

Get Setup Status

To get the complementary software setup status of GeoMedia PDF:

Pseudo code only; syntax depends on the scripting language.

```
RetVal = Setup.exe /s "GeoMedia PDF" /us
```

Uninstall Setup

To uninstall the complementary software setup of GeoMedia PDF:

```
Setup.exe /s "GeoMedia PDF" /u /x
```

Index

A

About Us • 5

B

Before You Install GeoMedia PDF • 9

C

Complementary Software • 13

Component Based Servicing Log • 27

Configuration • 13

Creating an MSI Log for One Specific Installation
• 26

D

Dialog Box Options • 12

Documentation Links • 12

E

Enabling Microsoft Windows Installer (MSI)
Logging • 26

G

GeoMedia PDF Documentation Set • 9

H

Hexagon Geospatial Setup Manager Logging •
27

Hexagon Geospatial Setup Manager User
Interface • 10

I

Icons • 13

Installing GeoMedia PDF • 14

Installing GeoMedia PDF in Silent Mode • 29

Installing GeoMedia PDF Using Hexagon
Geospatial Setup Manager • 10

Issue with Specific Projections • 28

L

Licensing GeoMedia PDF • 23

Logging the Installation of Product XYZ • 26

Logging the Patching of a Product that Already
Has Been Installed • 27

N

New Software or Installed Software • 12

O

Overview GeoMedia PDF Installation • 9

Overview of Hexagon Geospatial Setup
Manager • 10

P

Product Documentation Copyright and Terms of
Use • 2

R

Removing GeoMedia PDF • 24

Removing Language Packs • 25

S

Software • 12

Starting GeoMedia PDF • 23

T

Technical Notes • 28

Technical Support and Information • 40

Tips for Resolving Issues in Installation Log • 27

Troubleshooting Installation Using Logs • 25



V

Version • 12

Viewing and Exporting Application Event Log
Information • 27

W

Windows Installer SDK Tools • 28

Technical Support and Information

Hexagon Geospatial® provides several ways to access information and to contact support, including self-help tools, Hexagon Geospatial Community, Hexagon Geospatial Developer Network, and phone support.

Hexagon Geospatial Community

You can find support-related discussion boards and knowledge bases across the Hexagon Geospatial products on the *Hexagon Geospatial Community* <http://community.hexagongeospatial.com>. Find more information about the community on a *Community blog* <http://blog.hexagongeospatial.com/join-the-community/>.

Blogs

Get the latest on our technologies: from what engineering is working on, to news about the latest APIs, as well as developer tips and tricks.

Discussions

Discuss topics with other Hexagon Geospatial Product pioneers and experts.

Knowledge and Support

Learn more about our products, find answers, get the latest updates, and connect with other Hexagon Geospatial Community members, or get support from our *support teams* <http://www.hexagongeospatial.com/support>.

Developer Network

Share technical information with other developers who use Hexagon Geospatial's SDKs and M.App Portfolio. To get full access to the Developer Network you need to purchase a Hexagon Geospatial Developer Network (HGDN) Subscription. With HGDN, you get broad access to select Hexagon Geospatial development products in one place. You will also get access to powerful toolkits, including currently published APIs and SDKs. You also get access to in-depth resources such as tutorials, collaborative samples, and web-based training.

Find more information about HGDN on a *Community blog* <http://community.hexagongeospatial.com/t5/About-the-Community/HGDN-Subscription/ba-p/3597>.

eTraining

Short, to-the-point videos showcasing specific workflows for many tasks and organized by product. We add new videos constantly, so check back often.

Tutorials

Written, step-by-step instructions for our most asked-about tasks. Includes helpful hints and introduction material to get you started with our products.



Professional Service Team

For support phone numbers or to submit sales inquiries, general questions, and comments, click the appropriate tabs at the top of the *Hexagon Geospatial Support* (<http://www.hexagongeospatial.com/support>) page.