



# WEB GIS

## RELEASE NOTES

October 2014

## About Us

Hexagon Geospatial helps you make sense of the dynamically changing world. Hexagon Geospatial provides the software products and platforms to a large variety of customers through direct sales, channel partners, and Hexagon businesses, including the underlying geospatial technology to drive Intergraph Security, Government & Infrastructure (SG&I) industry solutions. Hexagon Geospatial is a division of Intergraph Corporation.

**CUSTOMERS.** Globally, a wide variety of organizations rely on our products daily including local, state and national mapping agencies, transportation departments, defense organizations, engineering and utility companies and businesses serving agriculture and natural resource needs. Our portfolio enables these organizations to holistically understand change and use information to make mission and business-critical decisions.

**TECHNOLOGY.** Our priority is to deliver products and solutions that make our customers successful. Hexagon Geospatial is focused on developing leading-edge technology that is easily configurable. Through extensible, scalable and collaborative products, we enable you to transform multi-source content into dynamic and actionable information. We are constantly re-conceptualizing and improving our products.

**PARTNERS.** As an organization, we are partner-focused, working alongside our channel to ensure we succeed together. We provide the right tools, products and support to our business partners so that they may successfully deliver sophisticated solutions for their customers. We recognize that we greatly extend our reach and influence by cultivating channel partner relationships both inside and outside of Hexagon.

**TEAM.** As an employer, we recognize that the success of our business is the result of our highly motivated and collaborative staff. At Hexagon Geospatial, we celebrate a diverse set of people and talents; and we respect people for who they are and the wealth of knowledge they bring to the table. We retain talent by fostering individual development and ensuring frequent opportunities to learn and grow.

**HEXAGON.** Hexagon Geospatial plays a key role in Hexagon's multi-industry focus, leveraging the entire portfolio for a wide variety of geospatial needs. Hexagon is a leading global provider of design, measurement and visualization technologies. Synergistic thinking is encouraged across all levels and functions at Hexagon companies, so that we all respond better and faster to our shared customer's needs.

For more information, visit [www.hexagongeospatial.com](http://www.hexagongeospatial.com) (<http://www.hexagongeospatial.com>) and [www.hexagon.com](http://www.hexagon.com) (<http://www.hexagon.com>).

# Introducing the Web GIS

Hexagon Geospatial's Web GIS integrates the power of **GeoMedia WebMap**, **Geospatial SDI** and **Geospatial Portal** products to provide:

- Real-time, web-based enterprise data access and sophisticated analysis
- Flexible, secured solutions based on standards
- Full-featured, multilingual, customizable web application

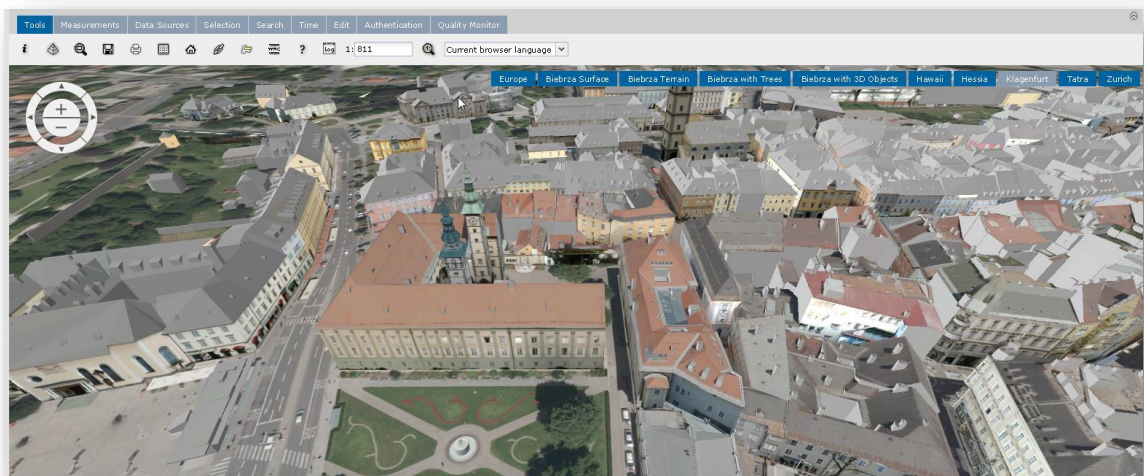
**GeoMedia® WebMap** is a fully-scalable server solution for building and deploying web services and websites. Create high-performance web applications, with real-time enterprise access and geospatial analysis using the familiar tools in GeoMedia desktop as a publishing platform.

**Geospatial SDI** is an interoperable and scalable spatial data infrastructure designed for data providers that need to manage and serve secure or licensed information using standards-based web services. It ensures adherence to OGC, INSPIRE, and ISO standards for web services and metadata compliance.

**Geospatial Portal** is a ready-to-run, browser-based solution for finding, viewing, and querying geospatial data and web services in a single, intuitive map view. It is installed and configured on a web application server, enabling multiple users to access the site.

This document describes the enhancements for **Web GIS**. Although the information in this document is current as of the product release, see the [Hexagon Geospatial Technical Support Web site](#) for the most current version.

This document is only an overview and does not provide all of the details about the product's capabilities. See the online help and other documents provided with Web GIS products for more information. For information on fixes that were made to Web GIS product for this release, see the Issues Resolved report on the [Hexagon Geospatial Technical Support Web site](#) for a specific product.



# What's New in 2015 Release

## Geospatial Portal for Consumers

- Configure and deploy your website with three clicks and no coding required
- Enjoy 2D and 3D visualizations in a modern layout based on optimized user experience
- Enable your public websites for desktop and mobile users

## 3D Vector Visualization Experience

- Vector features in 3D – highlight features, see tooltips and detailed feature information
- Perform Shadow Analysis
- Extrude 2D vector features to build 3D cities in seconds
- Measure features in 3D on the web

## Smart Workflows on the Web

- Use Smart Workflows integrated with Geospatial Portal and GeoMedia WebMap
- Add your workflow to GUI with one click in Administration Console
- Configure visualizations and feature editing as part of your workflow
- Run workflows directly in your browser

## Solutions Community – Extensions

- Customize and Extend standard platform functionality to meet your business needs
- Share your experience, learn from others
- Participate in the Community of Developers